

For Research Use Only

# PE Anti-Mouse CD62L (L-Selectin) (MEL-14)

Catalog Number: PE-65123



## Basic Information

Catalog Number:

PE-65123

Size:

100ug, 0.2 mg/ml

Source:

Rat

Isotype:

IgG2a, kappa

GenBank Accession Number:

BC052681

GeneID (NCBI):

20343

UNIPROT ID:

P18337

Full Name:

selectin, lymphocyte

Purification Method:

Affinity purification

CloneNo.:

MEL-14

Recommended Dilutions:

FC: 0.13 ug per 10<sup>6</sup> cells in 100 µl suspension

Excitation/Emission maximum wavelengths:

496 nm, 565 nm / 578 nm

## Applications

Tested Applications:

FC

Species Specificity:

Mouse

Positive Controls:

FC : mouse splenocytes,

## Background Information

CD62L, also known as L-selectin or SEL, is a member of the selectin family of adhesion molecules that also include CD62E (E-selectin) and CD62P (P-selectin) (PMID: 2663882, 2473156, 1382078). CD62L is a highly glycosylated protein of 95-105 kDa on neutrophils and 74 kDa on lymphocytes (PMID: 1382078; 1694883, 1695155). CD62L is expressed on the surface of most leukocytes, including lymphocytes, neutrophils, monocytes, eosinophils, hematopoietic progenitor cells, and immature thymocytes (PMID: 1694883, 1688580). It mediates the binding of lymphocytes to high endothelial venules (HEV) of peripheral lymph nodes through interactions with a constitutively expressed ligand, and is also involved in lymphocyte, neutrophil, and monocyte attachment to endothelium at sites of inflammation (PMID: 1382078).

## Storage

Storage:

Store at 2-8°C. Avoid exposure to light. Stable for one year after shipment.

Storage Buffer:

PBS with 0.09% sodium azide and 0.1% gelatin, pH7.2

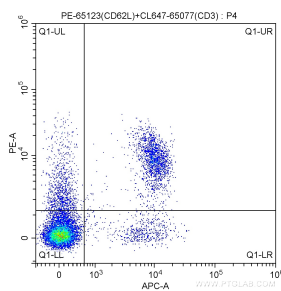
For technical support and original validation data for this product please contact:

T: 1 (888) 4PTGLAB (1-888-478-4522) (toll free in USA), or 1(312) 455-8498 (outside USA)

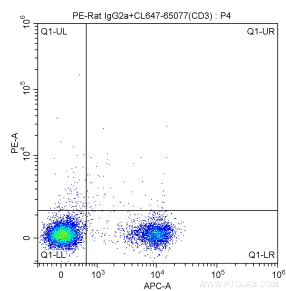
E: [proteintech@ptglab.com](mailto:proteintech@ptglab.com)  
W: [ptglab.com](http://ptglab.com)

This product is exclusively available under Proteintech Group brand and is not available to purchase from any other manufacturer.

## Selected Validation Data



1X10<sup>6</sup> C57BL/6 mouse splenocytes were surface stained with CoraLite® Plus 647-conjugated Anti-Mouse CD3 (CL647-65077, Clone: 17A2) and 0.13 ug PE-Anti-Mouse CD62L (L-Selectin) (PE-65123, Clone: MEL-14). Cells were not fixed.



1X10<sup>6</sup> C57BL/6 mouse splenocytes were surface stained with CoraLite® Plus 647-conjugated Anti-Mouse CD3 (CL647-65077, Clone: 17A2) and 0.13 ug PE-Rat IgG2a isotype control antibody. Cells were not fixed.