

For Research Use Only

PE Mouse IgG1 Isotype Control (MOPC-21)



Catalog Number: PE-65124

1 Publications

Basic Information

Catalog Number:

PE-65124

Size:

100ug, 0.2 mg/ml

Source:

Mouse

Isotype:

IgG1, kappa

GenBank Accession Number:

GeneID (NCBI):

16017

UNIPROT ID:

P01868

Full Name:

immunoglobulin heavy constant gamma 1 (G1m marker)

Purification Method:

Affinity purification

CloneNo.:

MOPC-21

Excitation/Emission maxima wavelengths:

496 nm, 565 nm / 578 nm

Applications

Tested Applications:

FC

Cited Applications:

FC

Species Specificity:

n/a

Background Information

The MOPC-21 immunoglobulin is useful as an isotype-matched control. The MOPC-21 immunoglobulin has an unknown binding specificity and is used as an isotype control for mouse IgG1 antibodies. This antibody has been quality-tested for flow cytometry as negative control.

Notable Publications

Author	Pubmed ID	Journal	Application
Chengcan Yang	37769871	J Endod	FC

Storage

Storage:

Store at 2-8°C. Avoid exposure to light. Stable for one year after shipment.

Storage Buffer:

PBS with 0.09% sodium azide and 0.5% BSA.

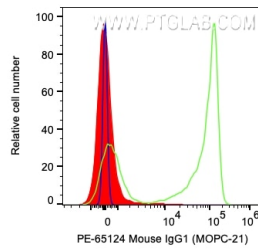
For technical support and original validation data for this product please contact:

T: 1 (888) 4PTGLAB (1-888-478-4522) (toll free in USA), or 1(312) 455-8498 (outside USA)

E: proteintech@ptglab.com
W: ptglab.com

This product is exclusively available under Proteintech Group brand and is not available to purchase from any other manufacturer.

Selected Validation Data



1X10⁶ human PBMCs were surface stained with 0.2 ug PE Anti-Mouse IgG1 Isotype Control (PE-65124, Clone:MOPC-21) (red), PE Anti-Human CD27 (green), or unstained (blue). Cells were not fixed. Lymphocytes were gated.