

For Research Use Only

# PE Anti-Rat CD8a (OX-8)

Catalog Number: PE-65180



## Basic Information

**Catalog Number:**  
PE-65180

**Size:**  
100ug, 200 µg/ml

**Source:**  
Mouse

**Isotype:**  
IgG1, kappa

**GenBank Accession Number:**  
BC088126

**GeneID (NCBI):**  
24930

**Full Name:**  
CD8a molecule

**Purification Method:**  
Purified by protein-A affinity chromatography

**CloneNo.:**  
OX-8

**Excitation/Emission maxima wavelengths:**  
496 nm, 565 nm / 578 nm

## Applications

**Tested Applications:**  
FC

**Species Specificity:**  
Rat

## Background Information

CD8 is a transmembrane glycoprotein composed of two disulfide-linked chains. It can be present as a homodimer of CD8a or as a heterodimer of CD8a and CD8β (PMID: 3264320; 8253791). CD8 is found on most thymocytes. The majority of class I-restricted T cells express mostly the CD8aβ heterodimer while CD8aα homodimers alone have been found on some gut intraepithelial T cells, on some T cell receptor (TCR) γδ T cells and on NK cells (PMID: 2111591; 1831127; 8420975). CD8 acts as a co-receptor that binds to MHC class-I and participates in cytotoxic T cell activation (PMID: 8499079). During T cell development, CD8 is required for positive selection of CD4-/CD8+ T cells (PMID: 1968084).

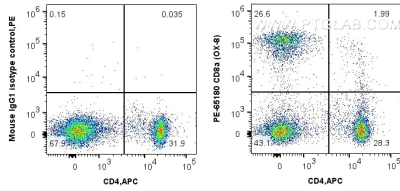
## Storage

**Storage:**  
Store at 2-8°C. Avoid exposure to light. Stable for one year after shipment.  
**Storage Buffer:**  
PBS with 0.1% sodium azide and 0.5% BSA.

For technical support and original validation data for this product please contact:  
T: 1 (888) 4PTGLAB (1-888-478-4522) (toll free in USA), or 1(312) 455-8498 (outside USA)  
E: proteintech@ptglab.com  
W: ptglab.com

This product is exclusively available under Proteintech Group brand and is not available to purchase from any other manufacturer.

## Selected Validation Data



1X10<sup>6</sup> rat splenocytes were surface co-stained with APC Anti-Rat CD4 (OX-35) and 0.2 ug PE Anti-Rat CD8a (PE-65180, Clone: OX-8) or 0.2 ug PE Mouse IgG1 Isotype Control (MOPC-21) (PE-65124, Clone: MOPC-21). Cells were not fixed.