

For Research Use Only

PE Anti-Human CD146 (P1H12)

Catalog Number: PE-65181

2 Publications



Basic Information

Catalog Number:

PE-65181

Size:

100 tests, 5 µl/test

Source:

Mouse

Isotype:

IgG1, kappa

GenBank Accession Number:

BC056418

GeneID (NCBI):

4162

UNIPROT ID:

P43121

Full Name:

melanoma cell adhesion molecule

Calculated MW:

646 aa, 72 kDa

Purification Method:

The purified antibody is conjugated with R-phycoerythrin (PE) under optimum conditions. The conjugate is purified by size-exclusion chromatography.

CloneNo.:

P1H12

Excitation/Emission maxima wavelengths:

496 nm, 565 nm / 578 nm

Applications

Tested Applications:

FC

Cited Applications:

FC

Species Specificity:

human, mouse, rabbit, canine

Cited Species:

human

Background Information

CD146, also known as melanoma cell adhesion molecule (MCAM) or MUC18, originally identified as a biomarker of melanoma progression, is a transmembrane glycoprotein of 113-130 kDa, belonging to the immunoglobulin (Ig) superfamily (PMID: 8378324; 25993332). Structurally, it consists of five Ig domains, a transmembrane domain, and a cytoplasmic region. In normal adult tissue, CD146 is primarily expressed by vascular endothelium and smooth muscle. CD146 is a key cell adhesion protein in vascular endothelial cell activity and angiogenesis, and has been used as marker of circulating endothelium cells (CECs) (PMID: 19356677). In addition to the membrane-anchored form of CD146, a soluble form of CD146 (sCD146, 105 kDa) has also been found in human plasma and in the supernatant of cultured human endothelial cells (PMID: 9462829; 19229070; 16374253; 14597988).

Notable Publications

Author	Pubmed ID	Journal	Application
Xun Xi	35756790	J Dent Sci	FC
Tao Jiang	37441553	J Tissue Eng	FC

Storage

Storage:

Store at 2-8°C. Avoid exposure to light. Stable for one year after shipment.

Storage Buffer:

PBS with 0.09% sodium azide and 0.5% BSA.

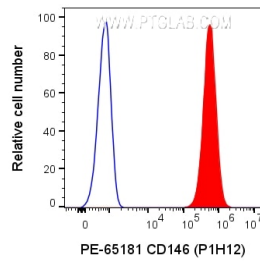
For technical support and original validation data for this product please contact:

T: 1 (888) 4PTGLAB (1-888-478-4522) (toll free in USA), or 1(312) 455-8498 (outside USA)

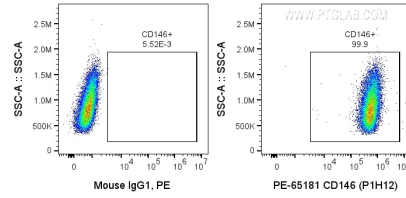
E: proteintech@ptglab.com
W: ptglab.com

This product is exclusively available under Proteintech Group brand and is not available to purchase from any other manufacturer.

Selected Validation Data



1X10⁶ A375 cells were surface stained with 5 ul PE Anti-Human CD146 (PE-65181, Clone: P1H12), or Mouse IgG1 Isotype Control. Cells were not fixed.



1X10⁶ A375 cells were surface stained with 5 ul PE Anti-Human CD146 (PE-65181, Clone: P1H12), or Mouse IgG1 Isotype Control. Cells were not fixed.