

For Research Use Only

PE Anti-Human CD64 (10.1) Mouse IgG2a Recombinant Antibody



Catalog Number: **PE-65572**

Basic Information

Catalog Number:

PE-65572

Size:

100 tests, 5 µl/test

Source:

Mouse

Isotype:

IgG2a

GenBank Accession Number:

BC032634

GeneID (NCBI):

2209

ENSEMBL Gene ID:

ENSG00000150337

Full Name:

Fc fragment of IgG, high affinity Ia, receptor (CD64)

Calculated MW:

374 aa, 43 kDa

Purification Method:

Protein A purification

CloneNo.:

10.1

Excitation/Emission maxima wavelengths:

496 nm, 565 nm / 578 nm

Applications

Tested Applications:

FC

Species Specificity:

human

Background Information

Fcγ receptor comprise a multigene family of integral membrane glycoproteins that exhibit complex activation or inhibitory effects on cell functions after aggregation by complexed immunoglobulin G (IgG) (PMID: 17005690). CD64, also known as Fcγ R1A, is a high-affinity receptor for the Fc region of IgG. It is expressed by monocytes/macrophages, activated neutrophils, dendritic cells, and early myeloid cells (PMID: 23293080; 19642859; 7680917). CD64 functions in both innate and adaptive immune responses.

Storage

Storage:

Store at 2-8°C. Avoid exposure to light.

Storage Buffer:

PBS with 0.09% sodium azide and 0.5% BSA.

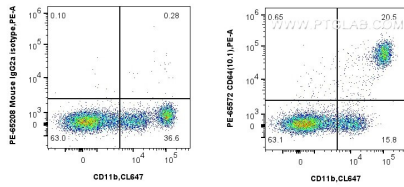
For technical support and original validation data for this product please contact:

T: 1 (888) 4PTGLAB (1-888-478-4522) (toll free in USA), or 1(312) 455-8498 (outside USA)

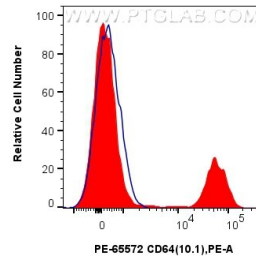
E: proteintech@ptglab.com
W: ptglab.com

This product is exclusively available under Proteintech Group brand and is not available to purchase from any other manufacturer.

Selected Validation Data



1x10⁶ human PBMCs were surface stained with CoraLite® Plus 647 Anti-Human CD11b and 5 ul PE Anti-Human CD64 (10.1) Mouse IgG2a Recombinant Antibody (PE-65572, Clone: 10.1), or PE Mouse IgG2a Isotype Control (C1.18.4) (PE-65208, Clone: C1.18.4). Cells were incubated with FC Receptor Block prior to staining. Cells were not fixed.



1x10⁶ human PBMCs were surface stained with 5 ul PE Anti-Human CD64 (10.1) Mouse IgG2a Recombinant Antibody (PE-65572, Clone: 10.1) (red), or PE Mouse IgG2a Isotype Control (C1.18.4) (PE-65208, Clone: C1.18.4) (blue). Cells were incubated with FC Receptor Block prior to staining. Cells were not fixed.