

For Research Use Only

PE-conjugated Biglycan Monoclonal antibody

Catalog Number: PE-67275



Basic Information

Catalog Number:

PE-67275

Size:

100ul , Concentration: 200 ug/ml by Nanodrop;

Source:

Mouse

Isotype:

IgG2a

Immunogen Catalog Number:

AG8012

GenBank Accession Number:

BC004244

GeneID (NCBI):

633

UNIPROT ID:

P21810

Full Name:

biglycan

Calculated MW:

42 kDa

Observed MW:

48 kDa

Purification Method:

Protein A purification

CloneNo.:

1E3F2

Recommended Dilutions:

FC (Intra): 0.1 ug per 10⁶ cells in a 100 µl suspension

Excitation/Emission maxima wavelengths:

496 nm, 565 nm / 578 nm

Applications

Tested Applications:

FC (Intra)

Species Specificity:

human, mouse, pig

Positive Controls:

FC (Intra) : HepG2 cells,

Background Information

Biglycan is a member of the small leucine-rich proteoglycan (SLRP) family (PMID: 18463092). It consists of a core protein of 42 kDa containing leucine-rich repeats (LRRs), to which two chondroitin/dermatan sulfate side chains are covalently bound (PMID: 2212616; 10383378). The tissue-specific chondroitin- or dermatan-sulfate glycosaminoglycan chains of biglycan are attached to amino acid residues at the N-terminus of the core protein (PMID: 22821552). Biglycan is a ubiquitous component of connective tissue matrix and may act as a signaling molecule (PMID: 22821552). Upregulation of biglycan has been reported in multiple types of solid cancer (PMID: 32194659).

Storage

Storage:

Store at 2-8°C. Avoid exposure to light. Stable for one year after shipment.

Storage Buffer:

PBS with 0.09% sodium azide and 0.5% BSA, pH7.3

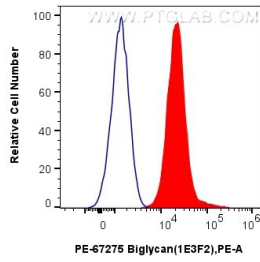
For technical support and original validation data for this product please contact:

T: 1 (888) 4PTGLAB (1-888-478-4522) (toll free in USA), or 1(312) 455-8498 (outside USA)

E: proteintech@ptglab.com
W: ptglab.com

This product is exclusively available under Proteintech Group brand and is not available to purchase from any other manufacturer.

Selected Validation Data



1x10⁶ HepG2 cells were intracellularly stained with 0.1 ug PE-conjugated Biglycan Monoclonal antibody (PE-67275, Clone:1E3F2)(red), or 0.1 ug PE Mouse IgG2a Isotype Control (C1.18.4) (PE-65208, Clone: C1.18.4) (blue). Cells were fixed and permeabilized with Intracellular Flow Cytometry Fixation & Permeabilization Buffer Kit (PF00019).