

For Research Use Only

PE-conjugated Phospho-CREB1 (Ser133) Recombinant antibody

Catalog Number: PE-81871



Basic Information

Catalog Number:

PE-81871

Size:

100ul , Concentration: 200 ug/ml by Nanodrop;

Source:

Rabbit

Isotype:

IgG

GenBank Accession Number:

BC010636

GeneID (NCBI):

1385

UNIPROT ID:

P16220

Full Name:

cAMP responsive element binding protein 1

Calculated MW:

341 aa, 35 kDa

Observed MW:

35-46 kDa

Purification Method:

Protein A purification

CloneNo.:

5H5

Recommended Dilutions:

FC (Intra): 0.13 ug per 10⁶ cells in a 100 µl suspension

Excitation/Emission maxima wavelengths:

496 nm, 565 nm / 578 nm

Applications

Tested Applications:

FC (Intra)

Species Specificity:

human

Positive Controls:

FC (Intra) : Calyculin A treated HEK-293 cells,

Background Information

The cAMP-response element binding protein (CREB) is localized in the nucleus and acts as a transcription factor, which binds to the cAMP response element (CRE) of the promoters of its target genes, upon phosphorylation at Ser133 by different receptor-activated protein kinases, such as protein kinase A (PKA), calmodulin-dependent protein kinase (CaMK), mitogen-activated protein kinases (MAPK), and other kinases. The activity of CREB1 in neurons has been correlated with various intracellular processes, including proliferation, differentiation, survival, long-term synaptic potentiation, neurogenesis, and neuronal plasticity. CREB1 belongs to the CREB/activating transcription factor (ATF) family of transcription factors. The antibody also detects the phosphorylated form of the CREB-related protein ATF1. (PMID: 30214393, PMID: 33917483, PMID: 32605164)

Storage

Storage:

Store at 2-8°C. Avoid exposure to light. Stable for one year after shipment.

Storage Buffer:

PBS with 0.09% sodium azide and 0.5% BSA, pH7.3

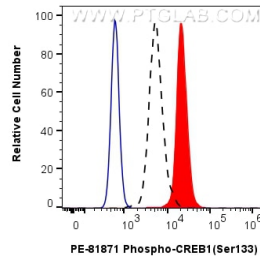
For technical support and original validation data for this product please contact:

T: 1 (888) 4PTGLAB (1-888-478-4522) (toll free in USA), or 1(312) 455-8498 (outside USA)

E: proteintech@ptglab.com
W: ptglab.com

This product is exclusively available under Proteintech Group brand and is not available to purchase from any other manufacturer.

Selected Validation Data



1X10⁶ HEK-293 cells untreated (dashed lines) or treated with Calyculin A (red) were intracellularly stained with 0.125 ug PE Anti-Human Phospho-CREB1 (Ser133) (PE-81871, Clone:5H5), or 0.125 ug Control Antibody (blue). Cells were fixed with 4% PFA and permeabilized with 90% MeOH.