

For Research Use Only

PE Anti-Human CTLA-4/CD152 Rabbit Recombinant Antibody

Catalog Number: PE-98078



Basic Information

Catalog Number:

PE-98078

Size:

100 tests, 5 µl/test

Source:

Rabbit

Isotype:

IgG

Immunogen Catalog Number:

EG0972

GenBank Accession Number:

BC070162

GeneID (NCBI):

1493

UNIPROT ID:

P16410

Full Name:

cytotoxic T-lymphocyte-associated protein 4

Calculated MW:

223 aa, 25 kDa

Purification Method:

Protein A purification

CloneNo.:

240793E8

Recommended Dilutions:

FC: 5 µl per 10⁶ cells in a 100 µl suspension

Excitation/Emission maximum wavelengths:

496 nm, 565 nm / 578 nm

Applications

Tested Applications:

FC

Species Specificity:

human

Positive Controls:

FC : PHA treated human PBMCs,

Background Information

CTLA-4, also known as CD152, belonging to the immunoglobulin superfamily, is primarily found on activated T cells and regulatory T cells (Tregs). CTLA-4 is closely related to the T-cell costimulatory CD28, and both molecules bind to B7-1 and B7-2 on antigen-presenting cells. CTLA-4 acts as a negative regulatory molecule of T-cell responses.

Storage

Storage:

Store at 2-8°C. Avoid exposure to light. Stable for one year after shipment.

Storage Buffer:

PBS with 0.09% sodium azide and 0.5% BSA, pH7.3

For technical support and original validation data for this product please contact:

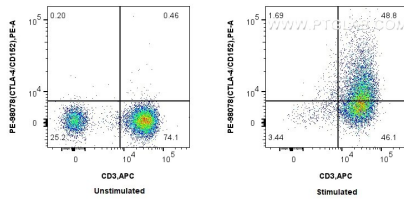
T: 1 (888) 4PTGLAB (1-888-478-4522) (toll free in USA), or 1(312) 455-8498 (outside USA)

E: proteintech@ptglab.com

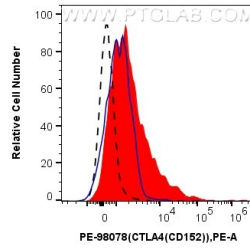
W: ptglab.com

This product is exclusively available under Proteintech Group brand and is not available to purchase from any other manufacturer.

Selected Validation Data



1x10⁶ unstimulated or PHA-stimulated human PBMCs were surface stained with APC Anti-Human CD3 and 5 ul PE Anti-Human CTLA-4/CD152 Rabbit Recombinant Antibody (PE-98078, Clone: 240793E8). Cells were not fixed.



1x10⁶ PHA-stimulated human PBMCs were surface stained with 5 ul PE Anti-Human CTLA-4/CD152 Rabbit Recombinant Antibody (PE-98078, Clone: 240793E8) (red) or PE Rabbit IgG Isotype Control Recombinant Antibody (PE-98136, Clone: 240953C9) (blue). 1x10⁶ unstimulated human PBMCs were surface stained with 5 ul PE Anti-Human CTLA-4/CD152 Rabbit Recombinant Antibody (PE-98078, Clone: 240793E8) (black, dashed). Cells were not fixed.