

For Research Use Only

PE Anti-Human CD16b Rabbit Recombinant Antibody

Catalog Number: PE-98192



Basic Information

Catalog Number:

PE-98192

Size:

100 tests, 5 µl/test

Source:

Rabbit

Isotype:

IgG

Immunogen Catalog Number:

EG2487

GenBank Accession Number:

GeneID (NCBI):

2215

Full Name:

Fc fragment of IgG, low affinity IIIb, receptor (CD16b)

Purification Method:

Protein A purification

CloneNo.:

241713E3

Recommended Dilutions:

FC: 5 µl per 10⁶ cells in a 100 µl suspension

Excitation/Emission maximum wavelengths:

496 nm, 565 nm / 578 nm

Applications

Tested Applications:

FC

Species Specificity:

human

Positive Controls:

FC : human peripheral blood leukocytes,

Background Information

CD16 is a low affinity Fc receptor. It has been identified as Fc receptors FcγRIIIa (CD16a) and FcγRIIIb (CD16b), encoded by two nearly identical genes, FCGR3A and FCGR3B. In humans, FcγRIIIa/CD16a is a type I transmembrane receptor expressed on macrophages and NK cells. FcγRIIIb/CD16b is a GPI-linked Fc-receptor highly expressed on neutrophils. The two proteins differ by only four amino acid residues in the mature proteins (PMID: 30361439).

Storage

Storage:

Store at 2-8°C. Avoid exposure to light. Stable for one year after shipment.

Storage Buffer:

PBS with 0.09% sodium azide and 0.5% BSA, pH7.3

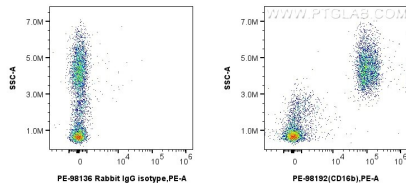
For technical support and original validation data for this product please contact:

T: 1 (888) 4PTGLAB (1-888-478-4522) (toll free in USA), or 1(312) 455-8498 (outside USA)

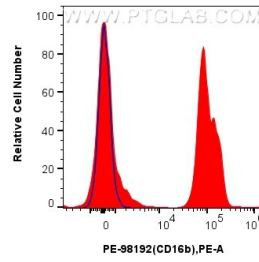
E: proteintech@ptglab.com
W: ptglab.com

This product is exclusively available under Proteintech Group brand and is not available to purchase from any other manufacturer.

Selected Validation Data



1x10⁶ human peripheral blood leukocytes were surface stained with 5 ul PE Anti-Human CD16b Rabbit RecAb (PE-98192, Clone: 241713E3) or PE Rabbit IgG Isotype Control RecAb (PE-98136, Clone: 240953C9). Cells were incubated with FC Receptor Block prior to staining. Cells were not fixed.



1x10⁶ human peripheral blood leukocytes were surface stained with 5 ul PE Anti-Human CD16b Rabbit RecAb (PE-98192, Clone: 241713E3) (red) or PE Rabbit IgG Isotype Control RecAb (PE-98136, Clone: 240953C9) (blue). Cells were incubated with FC Receptor Block prior to staining. Cells were not fixed.