

For Research Use Only

# PE Anti-Mouse CCL1 Rabbit Recombinant Antibody

Catalog Number: PE-98502-2



## Basic Information

Catalog Number:

PE-98502-2

Size:

100ug, 200 ug/ml

Source:

Rabbit

Isotype:

IgG

Immunogen Catalog Number:

EG3293

GenBank Accession Number:

NM\_011329.3

GeneID (NCBI):

20290

UNIPROT ID:

P10146-1

Full Name:

chemokine (C-C motif) ligand 1

Calculated MW:

10KD

Purification Method:

Protein A purification

CloneNo.:

250094D6

Recommended Dilutions:

FC (Intra): 0.1 ug per 10<sup>6</sup> cells in a 100 µl suspension

Excitation/Emission maxima wavelengths:

496 nm, 565 nm / 578 nm

## Applications

Tested Applications:

FC (Intra)

Species Specificity:

mouse

Positive Controls:

FC (Intra): Transfected HEK-293T cells,

## Background Information

CCL1, also known as I-309 in human or TCA-3 in mice, is a small glycoprotein belonging to the CC chemokine family. It is predominantly expressed by activated T cells, monocytes, and endothelial cells, and primarily acts as a chemoattractant for monocytes and T cells. CCL1 binds to the receptor CCR8, which is expressed on monocytes, neutrophils, and T cells, including within the thymus. This chemokine may perform dual functions: as an inflammatory chemokine during leukocyte migration into inflammatory sites and as a constitutive chemokine during T cell selection in the thymus. Furthermore, CCL1 has been associated with allergic inflammation and the recruitment of Th2 cells, suggesting a role in allergic diseases such as asthma.

## Storage

Storage:

Store at 2-8°C. Avoid exposure to light. Stable for one year after shipment.

Storage Buffer:

PBS with 0.09% sodium azide and 0.5% BSA, pH7.3

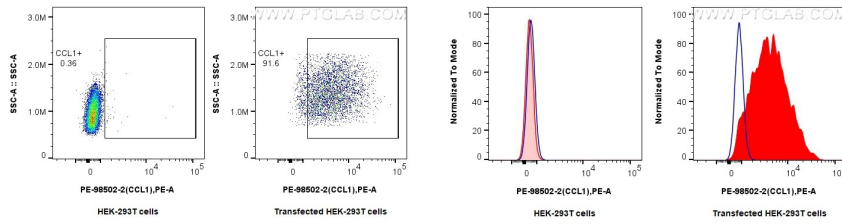
For technical support and original validation data for this product please contact:

T: 1 (888) 4PTGLAB (1-888-478-4522) (toll free in USA), or 1(312) 455-8498 (outside USA)

E: [proteintech@ptglab.com](mailto:proteintech@ptglab.com)  
W: [ptglab.com](http://ptglab.com)

**This product is exclusively available under Proteintech Group brand and is not available to purchase from any other manufacturer.**

## Selected Validation Data



1x10<sup>6</sup> HEK-293T cells or CCL1-transfected HEK-293T cell were intracellularly stained with 0.1 ug PE Anti-Mouse CCL1 Rabbit RecAb (PE-98502-2, Clone: 250094D6). Cells were fixed and permeabilized with Intracellular Flow Cytometry Fixation & Permeabilization Buffer Kit (PF00019).

1x10<sup>6</sup> HEK-293T cells or CCL1-transfected HEK-293T cells were intracellularly stained with 0.1 ug PE Anti-Mouse CCL1 Rabbit RecAb (PE-98502-2, Clone: 250094D6) (red) or PE Rabbit IgG Isotype Control Recombinant Antibody (PE-98136, Clone: 240953C9) (blue). Cells were fixed and permeabilized with Intracellular Flow Cytometry Fixation & Permeabilization Buffer Kit (PF00019).