

For Research Use Only

PE Anti-Human CD146/MCAM Rabbit Recombinant Antibody

Catalog Number: PE-98561-2



Basic Information

Catalog Number: PE-98561-2	GenBank Accession Number: NM_006500.2	Purification Method: Protein A purification
Size: 100 tests, 5 ul/test	GeneID (NCBI): 4162	CloneNo.: 250530B2
Source: Rabbit	UNIPROT ID: P43121-1	Recommended Dilutions: FC: 5 ul per 10 ⁶ cells in a 100 µl suspension
Isotype: IgG	Full Name: melanoma cell adhesion molecule	Excitation/Emission maxima wavelengths: 496 nm, 565 nm / 578 nm
Immunogen Catalog Number: EG2938	Calculated MW: 72 kDa	

Applications

Tested Applications: FC	Positive Controls: FC : HeLa cells,
Species Specificity: human	

Background Information

CD146, also known as melanoma cell adhesion molecule (MCAM) or MUC18, originally identified as a biomarker of melanoma progression, is a transmembrane glycoprotein of 113-130 kDa, belonging to the immunoglobulin (Ig) superfamily (PMID: 8378324; 25993332). Structurally, it consists of five Ig domains, a transmembrane domain, and a cytoplasmic region. In normal adult tissue, CD146 is primarily expressed by vascular endothelium and smooth muscle. CD146 is a key cell adhesion protein in vascular endothelial cell activity and angiogenesis, and has been used as marker of circulating endothelium cells (CECs) (PMID: 19356677). In addition to the membrane-anchored form of CD146, a soluble form of CD146 (sCD146, 105 kDa) has also been found in human plasma and in the supernatant of cultured human endothelial cells (PMID: 9462829; 19229070; 16374253; 14597988).

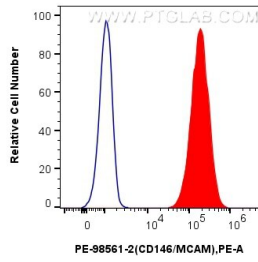
Storage

Storage:
Store at 2-8°C. Avoid exposure to light. Stable for one year after shipment.
Storage Buffer:
PBS with 0.09% sodium azide and 0.5% BSA, pH7.3

For technical support and original validation data for this product please contact:
T: 1 (888) 4PTGLAB (1-888-478-4522) (toll free in USA), or 1(312) 455-8498 (outside USA) E: proteintech@ptglab.com
W: ptglab.com

This product is exclusively available under Proteintech Group brand and is not available to purchase from any other manufacturer.

Selected Validation Data



1x10⁶ HeLa cells were surface stained with 5 ul PE Anti-Human CD146/MCAM Rabbit RecAb (PE-98561-2, Clone: 250530B2) (red) or PE Rabbit IgG Isotype Control RecAb (PE-98136, Clone: 240953C9) (blue). Cells were not fixed.