

For Research Use Only

PE Anti-Whitlow/218 Linker Rabbit Recombinant Antibody

Catalog Number: PE-98672-3



Basic Information

Catalog Number:

PE-98672-3

Size:

100ug, 200 ug/ml

Source:

Rabbit

Isotype:

IgG

GenBank Accession Number:

GeneID (NCBI):

Full Name:

Purification Method:

Protein A purification

CloneNo.:

252007G1

Recommended Dilutions:

FC: 0.1 ug per 10⁶ cells in a 100 µl suspension

Excitation/Emission maxima wavelengths:

496 nm, 565 nm / 578 nm

Applications

Tested Applications:

FC

Species Specificity:

n/a

Positive Controls:

FC : Transfected HEK-293T cells,

Background Information

The 218 Linker (also known as the Whitlow linker) is a synthetic peptide sequence, connecting two protein domains, most commonly the Variable Heavy (VH) and Variable Light (VL) chains of an antibody, to form a stable single-chain variable fragment (scFv) (PMID: 8309948). Its standard amino acid sequence is GSTSGSGKPGSGEGSTKG.

Storage

Storage:

Store at 2-8°C. Avoid exposure to light. Stable for one year after shipment.

Storage Buffer:

PBS with 0.09% sodium azide and 0.5% BSA, pH7.3

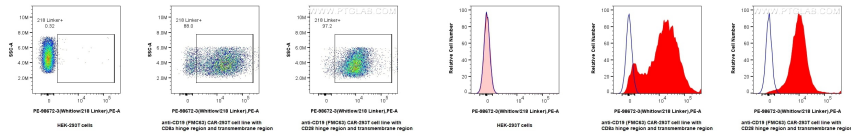
For technical support and original validation data for this product please contact:

T: 1 (888) 4PTGLAB (1-888-478-4522) (toll free in USA), or 1(312) 455-8498 (outside USA)

E: proteintech@ptglab.com
W: ptglab.com

This product is exclusively available under Proteintech Group brand and is not available to purchase from any other manufacturer.

Selected Validation Data



1x10⁶ HEK-293T cells or anti-CD19 (FMC63) CAR with CD28 or CD8a hinge region and transmembrane region transfected HEK-293T cells were surface stained with 0.1 ug PE Anti-Whitlow/218 Linker Rabbit RecAb (PE-98672-3, Clone: 252007G1) or PE Rabbit IgG Isotype Control RecAb (PE-98136, Clone: 240953C9). Cells were not fixed.

1x10⁶ HEK-293T cells or anti-CD19 (FMC63) CAR with CD28 or CD8a hinge region and transmembrane region transfected HEK-293T cells were surface stained with 0.1 ug PE Anti-Whitlow/218 Linker Rabbit RecAb (PE-98672-3, Clone: 252007G1) (red) or PE Rabbit IgG Isotype Control RecAb (PE-98136, Clone: 240953C9) (blue). Cells were not fixed.