

For Research Use Only

PE Mouse IgG1, κ Isotype Control Recombinant Antibody

Catalog Number: PE-98742-2



Basic Information

Catalog Number:

PE-98742-2

Size:

100ug, 200 ug/ml

Source:

Mouse

Isotype:

IgG1, kappa

GenBank Accession Number:

GeneID (NCBI):

Full Name:

Purification Method:

Protein G purification

CloneNo.:

MOPC-21

Recommended Dilutions:

FC: 0.1 ug per 10^6 cells in a 100 μ l suspension

Excitation/Emission maxima wavelengths:

496 nm, 565 nm / 578 nm

Applications

Tested Applications:

FC

Species Specificity:

n/a

Positive Controls:

FC : human PBMCs, THP-1 cells, splenocytes

Background Information

The MOPC-21 immunoglobulin is useful as an isotype-matched control. The MOPC-21 immunoglobulin has an unknown binding specificity and is used as an isotype control for mouse IgG1 antibodies. This antibody has been quality-tested for flow cytometry as a negative control.

Storage

Storage:

Store at 2-8°C. Avoid exposure to light. Stable for one year after shipment.

Storage Buffer:

PBS with 0.09% sodium azide and 0.5% BSA, pH7.3

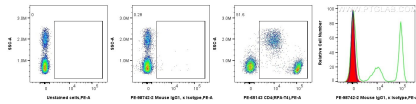
For technical support and original validation data for this product please contact:

T: 1 (888) 4PTGLAB (1-888-478-4522) (toll free in USA), or 1(312) 455-8498 (outside USA)

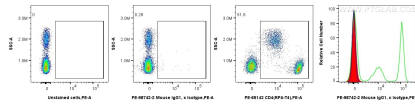
E: proteintech@ptglab.com
W: ptglab.com

This product is exclusively available under Proteintech Group brand and is not available to purchase from any other manufacturer.

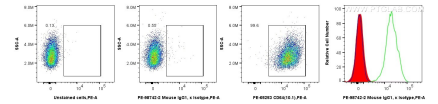
Selected Validation Data



1x10⁶ human PBMCs were surface stained with 0.1 ug PE Mouse IgG1, κ Isotype Control RecAb (PE-98742-2, Clone: MOPC-21) (red in histogram) or 0.1 ug PE Anti-Human CD4 (RPA-T4) (PE-65143, Clone: RPA-T4) (green in histogram) or unstained (blue in histogram). Cells were incubated with MonoZero™ Human/Mouse 3-in-1 blocking Reagent (PF00029) prior to staining. Cells were not fixed.



1x10⁶ rat splenocytes were surface stained with 0.1 ug PE Mouse IgG1, κ Isotype Control RecAb (PE-98742-2, Clone: MOPC-21) (red in histogram) or 0.1 ug PE Anti-Human CD4 (RPA-T4) (PE-65143, Clone: RPA-T4) (green in histogram) or unstained (blue in histogram). Cells were incubated with MonoZero™ Human/Mouse 3-in-1 blocking Reagent (PF00029) prior to staining. Cells were not fixed.



1x10⁶ THP-1 cells were surface stained with 0.1 ug PE Mouse IgG1, κ Isotype Control RecAb (PE-98742-2, Clone: MOPC-21) (red in histogram) or 0.1 ug PE Anti-Human CD4 (RPA-T4) (PE-65143, Clone: RPA-T4) (green in histogram) or unstained (blue in histogram). Cells were incubated with MonoZero™ Human/Mouse 3-in-1 blocking Reagent (PF00029) prior to staining. Cells were not fixed.