

For Research Use Only

FcZero-rAb™ PE Anti-Human HLA-DR (L243) Rabbit IgG Recombinant Antibody

Catalog Number: PE-FcA65560



Basic Information

Catalog Number: PE-FcA65560	GenBank Accession Number: BC032350	Purification Method: Protein A purification
Size: 100tests , 5 ul/test	GeneID (NCBI): 3122	CloneNo.: L243
Source: Rabbit	ENSEMBL Gene ID: ENSG00000204287	Excitation/Emission maxima wavelengths: 496 nm, 565 nm / 578 nm
Isotype: IgG	Full Name: major histocompatibility complex, class II, DR alpha	
	Calculated MW: 254 aa, 29 kDa	

Applications

Tested Applications:
FC

Species Specificity:
human

Background Information

HLA-DR is a member of MHC class II molecules encoded by the human leukocyte antigen complex on the region 6p21.31 of chromosome 6. HLA-DR is composed of two non-covalently associated transmembrane glycoproteins (the α and β chains), and is primarily expressed on B lymphocytes, monocytes, dendritic cells and thymic epithelial cells (PMID: 33125816). HLA-DR participate in the antigen presentation to CD4+ or CD8+ T cells and is postulated as a general biomarker of sepsis-induced immunosuppression (PMID: 28199206, 32421903).

Storage

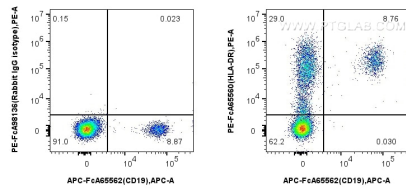
Storage:
Store at 2-8°C. Avoid exposure to light. Stable for one year after shipment.

Storage Buffer:
PBS with 0.09% sodium azide and 0.5% BSA.

For technical support and original validation data for this product please contact:
T: 1 (888) 4PTGLAB (1-888-478-4522) (toll free in USA), or 1(312) 455-8498 (outside USA)
E: proteintech@ptglab.com
W: ptglab.com

This product is exclusively available under Proteintech Group brand and is not available to purchase from any other manufacturer.

Selected Validation Data



1x10⁶ human PBMCs were surface stained with FcZero-rAbTM APC Anti-Human CD19 (4G7), and 5 ul PE Anti-Human HLA-DR (L243) Rabbit IgG RecAb (PE-FcA65560, Clone: L243) or PE Rabbit IgG Isotype Control RecAb (PE-FcA98136, Clone: 240953C9). Cells were not fixed.