

For Research Use Only

FcZero-rAb™ PE Anti-Human CD107b / LAMP2 (H4B4) Rabbit IgG Recombinant Antibody

Catalog Number: PE-FcA65566



Basic Information

Catalog Number: PE-FcA65566	GenBank Accession Number: BC002965	Purification Method: Protein A purification
Size: 100 tests, 5 ul/test	GeneID (NCBI): 3920	CloneNo.: H4B4
Source: Rabbit	ENSEMBL Gene ID: ENSG00000005893	Recommended Dilutions: IF/ICC 1:50-1:500
Isotype: IgG	Full Name: lysosomal-associated membrane protein 2	Excitation/Emission maxima wavelengths: 496 nm, 565 nm / 578 nm
	Calculated MW: 45 kDa	

Applications

Tested Applications: IF/ICC, FC (Intra)	Positive Controls: IF/ICC : HeLa cells,
Species Specificity: human	

Background Information

LAMP2 (CD107b) is a Lysosomal membrane glycoprotein. LAMP2 is extensively glycosylated with asparagine-linked oligosaccharides which protect it from intracellular proteolysis (PMID: 10521503). Although LAMP-2 is localized primarily in the endosome-lysosomal membrane of cells, it is also found on the plasma membrane under certain circumstances, e.g., after platelet activation, during granulocytic differentiation and activation, and in some tumor cells (PMID: 12221139). LAMP is involved in lysosomal stability and autophagy (PMID: 12221139). This glycoprotein provides selectins with carbohydrate ligands. LAMP2 may play a role in tumor cell metastasis (PMID 9426697).

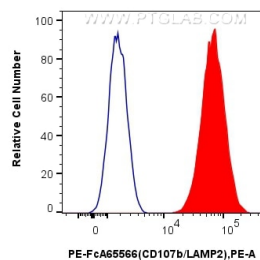
Storage

Storage:
Store at 2-8°C. Avoid exposure to light. Stable for one year after shipment.
Storage Buffer:
PBS with 0.09% sodium azide and 0.5% BSA.

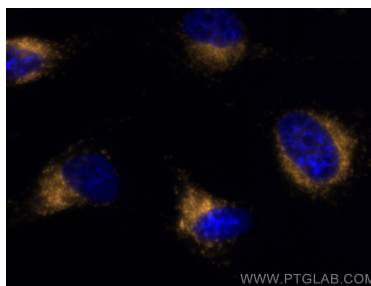
For technical support and original validation data for this product please contact:
T: 1 (888) 4PTGLAB (1-888-478-4522) (toll free in USA), or 1(312) 455-8498 (outside USA)
E: proteintech@ptglab.com
W: ptglab.com

This product is exclusively available under Proteintech Group brand and is not available to purchase from any other manufacturer.

Selected Validation Data



1x10⁶ Jurkat cells were intracellularly stained with 5 μ l PE Anti-Human CD107b / LAMP2 (H4B4) Rabbit IgG Recombinant Antibody (PE-FcA65566, Clone:H4B4)(red), or PE Rabbit IgG Isotype Control Recombinant Antibody (PE-FcA98136, Clone: 240953C9) (blue). Cells were fixed with 4% PFA and permeabilized with Flow Cytometry Perm Buffer (PF00011-C).



Immunofluorescent analysis of (-20°C Ethanol) fixed HeLa cells using PE CD107b / LAMP2 antibody (PE-FcA65566, Clone: H4B4) at dilution of 1:50.