

For Research Use Only

FcZero-rAb™ PE Anti-Human CD18 (TS1/18) Rabbit IgG Recombinant Antibody

Catalog Number: PE-FcA65595



Basic Information

Catalog Number:

PE-FcA65595

Size:

100 tests, 5 ul/test

Source:

Rabbit

Isotype:

IgG

GenBank Accession Number:

BC005861

GeneID (NCBI):

3689

ENSEMBL Gene ID:

ENSG00000160255

Full Name:

integrin, beta 2 (complement component 3 receptor 3 and 4 subunit)

Calculated MW:

85 kDa

Purification Method:

Protein A purification

CloneNo.:

TS1/18

Excitation/Emission maxima wavelengths:

496 nm, 565 nm / 578 nm

Applications

Tested Applications:

FC

Species Specificity:

human

Background Information

CD18, also known as integrin beta-2, is a transmembrane protein that forms heterodimers with CD11a, CD11b, CD11c, CD11d (PMID: 1968349). CD11a/CD18 (LFA-1) is expressed by all leukocytes, while CD11b/CD18 (Mac-1) and CD11c/CD18 (p150,95) are normally restricted to expression on monocytes, macrophages, polymorphonuclear lymphocytes (PMNs), and natural killer cells (PMID: 1968349; 3109455; 10946284). CD18 plays an important role in mediating cell adhesion during immune response and defects of CD18 cause leukocyte adhesion deficiency (PMID: 3594570).

Storage

Storage:

Store at 2-8°C. Avoid exposure to light. Stable for one year after shipment.

Storage Buffer:

PBS with 0.09% sodium azide and 0.5% BSA.

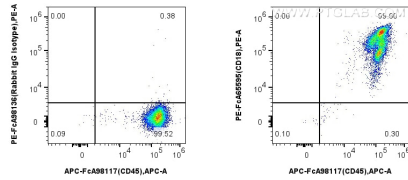
For technical support and original validation data for this product please contact:

T: 1 (888) 4PTGLAB (1-888-478-4522) (toll free in USA), or 1(312) 455-8498 (outside USA)

E: proteintech@ptglab.com
W: ptglab.com

This product is exclusively available under Proteintech Group brand and is not available to purchase from any other manufacturer.

Selected Validation Data



1x10⁶ human PBMCs were surface stained with 5 ul PE Anti-Human CD18 (TS1/18) Rabbit IgG RecAb (PE-FcA65595, Clone: TS1/18), and 5 ul FcZero-rAb™ APC Anti-Human CD45 Rabbit Recombinant Antibody (APC-FcA98117, Clone: 241670E10), or 5 ul PE Rabbit IgG Isotype Control RecAb (PE-FcA98136, Clone: 240953C9). Cells were not fixed.