

For Research Use Only

FcZero-rAb® PE Anti-Human CD1c (L161) Rabbit Recombinant Antibody

Catalog Number: PE-FcA65626



Basic Information

Catalog Number:

PE-FcA65626

Size:

100tests , 5 ul/test

Source:

Rabbit

Isotype:

IgG

GenBank Accession Number:

BC126465

GeneID (NCBI):

911

UNIPROT ID:

P29017

Full Name:

CD1c molecule

Purification Method:

Protein A purification

CloneNo.:

L161

Recommended Dilutions:

FC: 5 ul per 10⁶ cells in a 100 µl suspension

Excitation/Emission maxima wavelengths:

496 nm, 565 nm / 578 nm

Applications

Tested Applications:

FC

Species Specificity:

human

Positive Controls:

FC : human peripheral blood leukocytes,

Background Information

CD1c molecule (CD1c, also known as R7, CD1, CD1A, and BDCA1) is a member of the CD1 family of transmembrane glycoproteins, which is synthesized in the endoplasmic reticulum and expressed on the monocytes, marginal zone B cells in lymph nodes as well as peripheral blood (PMID: 23468110). The CD1 proteins belong to the family of major histocompatibility complex (MHC) class I-like proteins that present lipid-based antigens to T cells (PMID: 15032598; 23127489). CD1c shows interaction with both αβ or γδ T cells and mediates T cell responses against mycobacterium tuberculosis (PMID: 10727456; 10786796).

Storage

Storage:

Store at 2-8°C. Avoid exposure to light. Stable for one year after shipment.

Storage Buffer:

PBS with 0.09% sodium azide and 0.5% BSA, pH7.3

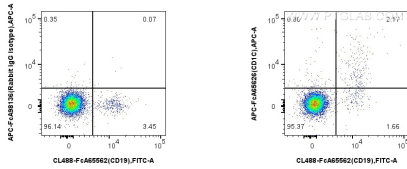
For technical support and original validation data for this product please contact:

T: 1 (888) 4PTGLAB (1-888-478-4522) (toll free in USA), or 1(312) 455-8498 (outside USA)

E: proteintech@ptglab.com
W: ptglab.com

This product is exclusively available under Proteintech Group brand and is not available to purchase from any other manufacturer.

Selected Validation Data



1x10⁶ human peripheral blood leukocytes were surface stained with FcZero-rAb™ CoraLite® Plus 488 Anti-Human CD19, and 5 ul PE Anti-Human CD1c (L161) Rabbit IgG RecAb (PE-FcA65626, Clone: L161) or Rabbit IgG Recombinant Antibody (CL488-FcA65626, Clone: 4G7). Cells were not fixed.

