

For Research Use Only

FcZero-rAb™ PE Anti-Human CD138/Syndecan-1 Rabbit Recombinant Antibody

Catalog Number: PE-FcA98051



Basic Information

Catalog Number:

PE-FcA98051

Size:

100 tests, 5 ul/test

Source:

Rabbit

Isotype:

IgG

Immunogen Catalog Number:

EG0132

GenBank Accession Number:

BC008765

GeneID (NCBI):

6382

Full Name:

syndecan 1

Calculated MW:

32.5 kDa

Purification Method:

Protein A purification

CloneNo.:

240422C4

Recommended Dilutions:

FC: 5 ul per 10⁶ cells in a 100 µl suspension

Excitation/Emission maximum wavelengths:

496 nm, 565 nm / 578 nm

Applications

Tested Applications:

FC

Species Specificity:

human

Positive Controls:

FC : U266 cells,

Background Information

CD138, also named as Syndecan-1 (SDC1), is an integral membrane protein. It participates in cell proliferation, cell migration and cell-matrix interactions via its receptor for extracellular matrix proteins. It is a heparan sulfate proteoglycan expressed on the surface of, and actively shed by, myeloma cells. Altered syndecan-1 expression has been detected in several different tumor types. CD138 was regarded as a useful marker for labeling normal and neoplastic plasma cells and plasmacytoid lymphomas.

Storage

Storage:

Store at 2-8°C. Avoid exposure to light. Stable for one year after shipment.

Storage Buffer:

PBS with 0.09% sodium azide and 0.5% BSA, pH7.3

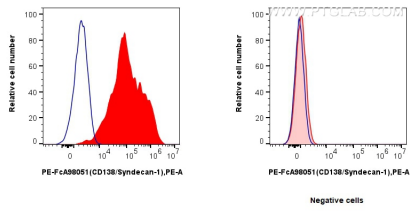
For technical support and original validation data for this product please contact:

T: 1 (888) 4PTGLAB (1-888-478-4522) (toll free in USA), or 1(312) 455-8498 (outside USA)

E: proteintech@ptglab.com
W: ptglab.com

This product is exclusively available under Proteintech Group brand and is not available to purchase from any other manufacturer.

Selected Validation Data



1x10⁶ U266 cells (left) or Jurkat cells (right) were surface stained with 5 μ l PE Anti-Human CD138/Syndecan-1 Rabbit RecAb (PE-FcA98051, Clone: 240422C4) (red) or PE Rabbit IgG Isotype Control RecAb (PE-FcA98136, Clone: 240953C9) (blue). Cells were not fixed.