

For Research Use Only

FcZero-rAb™ PE Anti-Human MICA/MICB Rabbit Recombinant Antibody

Catalog Number: PE-FcA98110



Basic Information

Catalog Number: PE-FcA98110	GenBank Accession Number: AAH16929.1	Purification Method: Protein A purification
Size: 100tests , 5 ul/test	GeneID (NCBI): 100507436	CloneNo.: 240735D5
Source: Rabbit	Full Name: MHC class I polypeptide-related sequence A	Excitation/Emission maxima wavelengths: 496 nm, 565 nm / 578 nm
Isotype: IgG	Calculated MW: 43 kDa	
Immunogen Catalog Number: EG1176		

Applications

Tested Applications: FC	Positive Controls: FC : HeLa cells,
Species Specificity: human	

Background Information

Human MHC class I chain-related genes located within the HLA class I region of chromosome 6 encode MHC class I chain-related A and B (MICA and MICB) (PMID: 11429322). MICA and MICB are stress-inducible surface molecules that are not associated with β 2-microglobulin and do not present peptides (PMID: 9497295). They are expressed in intestinal epithelium and many epithelial tumors (PMID: 10359807). MICA and MICB are ligands for NKG2D which is an activating receptor that is expressed on most natural killer (NK) cells, CD8 $\alpha\beta$ T cells, and $\gamma\delta$ T cells (PMID: 10426993; 11491531). This antibody recognizes both MICA and MICB.

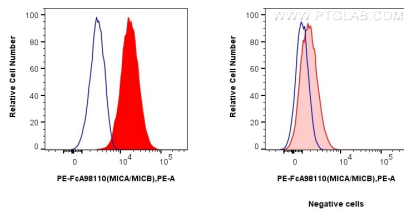
Storage

Storage:
Store at 2-8°C. Avoid exposure to light. Stable for one year after shipment.
Storage Buffer:
PBS with 0.09% sodium azide and 0.5% BSA, pH7.3

For technical support and original validation data for this product please contact:
T: 1 (888) 4PTGLAB (1-888-478-4522) (toll free in USA), or 1(312) 455-8498 (outside USA)
E: proteintech@ptglab.com
W: ptglab.com

This product is exclusively available under Proteintech Group brand and is not available to purchase from any other manufacturer.

Selected Validation Data



1x10⁶ HeLa cells (left) or Jurkat cells (right) were surface stained with 5 ul PE Anti-Human MICA/MICB Rabbit RecAb (PE-FcA98110, Clone: 240735D5) (red) or PE Rabbit IgG Isotype Control RecAb (PE-FcA98136, Clone: 240953C9) (blue). Cells were not fixed.