

For Research Use Only

# FcZero-rAb™ PE Anti-Human IGF1R/CD221 Rabbit Recombinant Antibody

Catalog Number: PE-FcA98144



## Basic Information

Catalog Number:

PE-FcA98144

Size:

100 tests, 5 µl/test

Source:

Rabbit

Isotype:

IgG

GenBank Accession Number:

BC113612

GeneID (NCBI):

3480

Full Name:

IGF I receptor

Calculated MW:

1367 aa, 155 kDa

Purification Method:

Protein A purification

CloneNo.:

241679A6

Excitation/Emission maxima wavelengths:

496 nm, 565 nm / 578 nm

## Applications

Tested Applications:

FC

Species Specificity:

human

Positive Controls:

FC : human peripheral blood leukocytes,

## Background Information

IGF1R, also named as CD221, is a receptor tyrosine kinase which mediates actions of INS-like growth factor 1 (IGF1). IGF1R binds IGF1 with high affinity and IGF2 and INS with a lower affinity, the activated IGF1R is involved in cell growth and survival control. It is crucial for tumor transformation and survival of malignant cells. IGF1R is a heterotetrameric receptor, composed of two alpha subunits (130 kDa each) and two beta subunits (~98 kDa each) (PMID: 6279656). Both the alpha and beta subunits are synthesized from a single mRNA precursor. The precursor is then glycosylated, proteolytically cleaved, and crosslinked by cysteine bonds.

## Storage

Storage:

Store at 2-8°C. Avoid exposure to light. Stable for one year after shipment.

Storage Buffer:

PBS with 0.09% sodium azide and 0.5% BSA, pH7.3

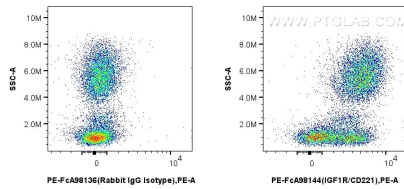
For technical support and original validation data for this product please contact:

T: 1 (888) 4PTGLAB (1-888-478-4522) (toll free in USA), or 1(312) 455-8498 (outside USA)

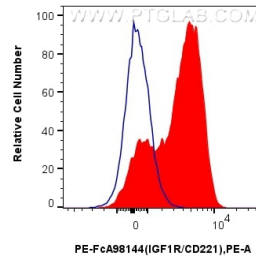
E: [proteintech@ptglab.com](mailto:proteintech@ptglab.com)  
W: [ptglab.com](http://ptglab.com)

This product is exclusively available under Proteintech Group brand and is not available to purchase from any other manufacturer.

## Selected Validation Data



1x10<sup>6</sup> human peripheral blood leukocytes were surface stained with 5 ul PE Anti-Human IGF1R/CD221 Rabbit RecAb (PE-FcA98144, Clone:241679A6) or PE Rabbit IgG Isotype Control RecAb (PE-FcA98136, Clone: 240953C9). Cells were not fixed.



1x10<sup>6</sup> human peripheral blood leukocytes were surface stained with 5 ul PE Anti-Human IGF1R/CD221 Rabbit RecAb (PE-FcA98144, Clone:241679A6) (red) or PE Rabbit IgG Isotype Control RecAb (PE-FcA98136, Clone: 240953C9) (blue). Cells were not fixed.