

For Research Use Only

FcZero-rAb® PE Anti-Human JAM-A/CD321 Rabbit Recombinant Antibody

Catalog Number:PE-FcA98328-3



Basic Information

Catalog Number:

PE-FcA98328-3

Size:

100tests , 5 ul/test

Source:

Rabbit

Isotype:

IgG

Immunogen Catalog Number:

EG1372

GenBank Accession Number:

NM_016946.6

GeneID (NCBI):

50848

UNIPROT ID:

Q9Y624-1

Full Name:

F11 receptor

Calculated MW:

33kDa

Purification Method:

Protein A purification

CloneNo.:

242290B3

Recommended Dilutions:

FC: 5 ul per 10⁶ cells in a 100 µl suspension

Excitation/Emission maxima wavelengths:

496 nm, 565 nm / 578 nm

Applications

Tested Applications:

FC

Species Specificity:

human

Positive Controls:

FC : human peripheral blood leukocytes,

Background Information

Junctional adhesion molecule A (JAM-A), also known as CD321 or F11 receptor (F11R), was first identified in human platelets as a 32/35 kDa protein duplex that serves as the receptor for a functional antibody that activates platelets. It seems to play a role in epithelial tight junction formation. It was also reported to function as a receptor for reovirus and a ligand for the integrin LFA1.

Storage

Storage:

Store at 2-8°C. Avoid exposure to light. Stable for one year after shipment.

Storage Buffer:

PBS with 0.09% sodium azide and 0.5% BSA, pH7.3

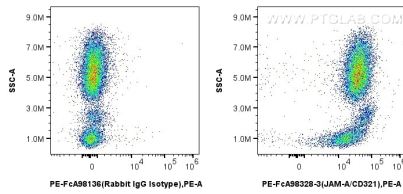
For technical support and original validation data for this product please contact:

T: 1 (888) 4PTGLAB (1-888-478-4522) (toll free in USA), or 1(312) 455-8498 (outside USA)

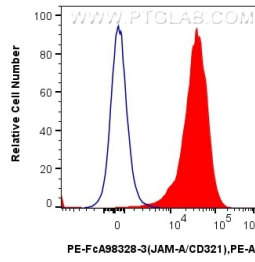
E: proteintech@ptglab.com
W: ptglab.com

This product is exclusively available under Proteintech Group brand and is not available to purchase from any other manufacturer.

Selected Validation Data



1x10⁶ human peripheral blood leukocytes were surface stained with 5 ul PE Anti-Human JAM-A/CD321 Rabbit RecAb (PE-FcA98328-3, Clone: 242290B3) or PE Rabbit IgG Isotype Control RecAb (PE-FcA98136, Clone: 240953C9). Cells were not fixed.



1x10⁶ human peripheral blood leukocytes were surface stained with 5 ul PE Anti-Human JAM-A/CD321 Rabbit RecAb (PE-FcA98328-3, Clone: 242290B3) (red) or PE Rabbit IgG Isotype Control RecAb (PE-FcA98136, Clone: 240953C9) (blue). Cells were not fixed.