

For Research Use Only

Human Monocyte Basics Panel

Catalog Number: PK30010



www.ptglab.com

Description

Monocytes are immune cells that monitor for signals of infection or tissue damage and respond through phagocytosis and antigen presentation or differentiation into macrophages or dendritic cells. This panel is designed for the investigation of Monocytes (CD14+/HLA-DR+) and for the further separation of the Monocyte population into Classical, Intermediate, and non-Classical Monocyte subpopulations. The PE channel is left open.

Panel Components

Fluorochrome (ex/em)	Catalog No	Target	Clone	Isotype	Description
CoraLite Plus 647 (654 nm/674 nm)	CL647-65133	CD3	OKT3	Mouse IgG2ak	Negative on monocytes
Atlantic Blue (404 nm/458 nm)	AB-65218	HLA-DR	L243	Mouse IgG2ak	Monocyte marker
CoraLite Plus 750 (755 nm/780 nm)	CL750-65246	CD14	26IC	Mouse IgG2b	Monocyte marker
Cardinal Red (592 nm/611 nm)	CR-65090	CD16	3G8	Mouse IgG1k	Distinguishes Classical vs. non-Classical Monocytes
FITC Plus (495 nm/524 nm)	FITC-65253	CD64	10.1	Mouse IgG1k	High expression on Classical Monocytes

Package

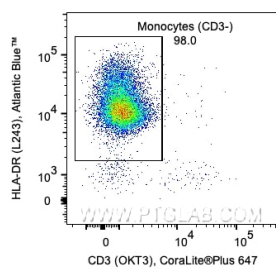
5x100 tests

Storage

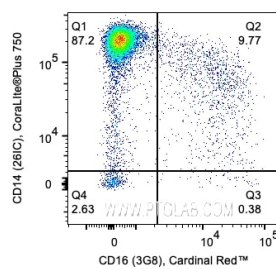
Storage Buffer: PBS with 0.09% sodium azide and 0.5% BSA.

Storage Conditions: Store at 2-8°C. Avoid exposure to light. Stable for one year after shipment.

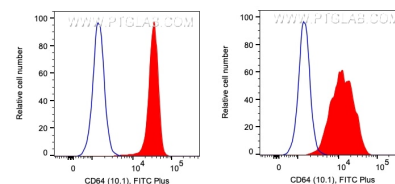
Validation Data



1x10⁶ Human PBMCs were stained with PK30010 Human Monocyte Basics Panel. CD3-/HLA-DR+ cells are gated. Parent population: monocytes. Cells were not fixed.



1x10⁶ Human PBMCs were stained with PK30010 Human Monocyte Basics Panel. CD14 and CD16 expression on CD3-/HLA-DR+ monocytes are shown. Cells were not fixed.



1x10⁶ Human PBMCs were stained with PK30010 Human Monocyte Basics Panel. CD64 expression on CD14^{bright}/CD16⁻ (left) and CD14^{dim}/CD16⁺ (right) cells is shown. Parent population: CD3-/HLA-DR+ cells.

For technical support and original validation data for this product please contact

T: 1 (888) 4PTGLAB(1-888-478-4522)(toll free in USA), or
1(312) 455-8498(outside USA)

E: proteintech@ptglab.com
W: ptglab.com

This product is exclusively available under Proteintech Group brand and is not available to purchase from any other manufacturer.