

For Research Use Only

Mouse Activated T Cell Panel

Catalog Number: PK30013

Product Information

T lymphocytes are immune cells that respond to foreign antigens by secreting cytokines (CD8⁺ Cytotoxic T cells) and coordinating the immune response (CD4⁺ Helper T cells).

This panel is designed for the identification of CD3⁺ T lymphocytes into CD4⁺ T Lymphocyte and CD8⁺ T Lymphocyte subpopulations and the evaluation of these two populations for activation with CD69 and CD25. The PE channel is left open.

Panel Components

Fluorochrome (ex/em)	Catalog No	Target	Clone	Isotype	Description
CoraLite Plus 647 (654 nm/674 nm)	CL647-65060	CD3ε	145-2C11	Armenian Hamster IgG	T cell marker
CoraLite Plus 405 (399 nm/422 nm)	CL405-65104	CD4	GK1.5	Rat IgG2bk	T helper cell marker
CoraLite 594 (588 nm/604 nm)	CL594-65069	CD8a	53-6.7	Rat IgG2ak	Cytotoxic T cell marker
CoraLite Plus 488 (493 nm/522 nm)	CL488-65105	CD69	H1.2F3	Armenian Hamster IgG	Marker of activation
CoraLite Plus 750 (755 nm/780 nm)	CL750-65137	CD25	PC61.5	Rat IgG1λ	Marker of activation

Package

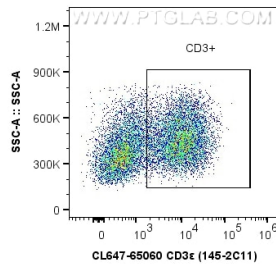
5×100 tests

Storage

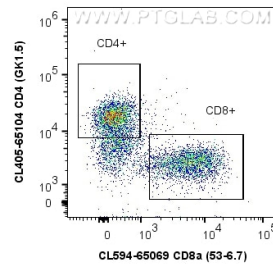
Storage Buffer: PBS with 0.09% sodium azide.

Storage Conditions: Store at 2-8°C. Avoid exposure to light. Stable for one year after shipment.

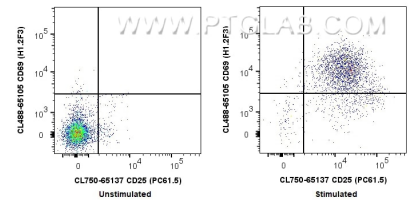
Validation Data



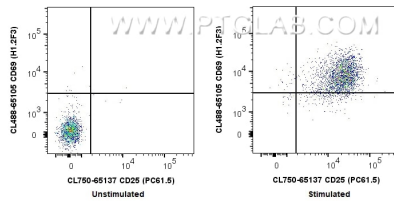
1x10⁶ ConA stimulated mouse splenocytes were stained with PK30013 Mouse Activated T Cell Panel. CD3+ cells are gated. Parent population: live cells. Cells were not fixed.



1x10⁶ ConA stimulated mouse splenocytes were stained with PK30013 Mouse Activated T Cell Panel. CD4 and CD8 expression on CD3+ cells is shown. Cells were not fixed.



1x10⁶ ConA stimulated (right) or unstimulated (left) mouse splenocytes were stained with PK30013 Mouse Activated T Cell Panel. CD25 and CD69 expression on CD3+ CD4+ T lymphocytes is shown. Cells were not fixed.



1x10⁶ ConA stimulated (right) or unstimulated (left) mouse splenocytes were stained with PK30013 Mouse Activated T Cell Panel. CD25 and CD69 expression on CD3+ CD8+ T lymphocytes is shown. Cells were not fixed.

For technical support and original validation data for this product please contact

T: 1 (888) 4PTGLAB(1-888-478-4522)(toll free in USA), or
1(312) 455-8498(outside USA)

E: proteintech@ptglab.com
W: ptglab.com

This product is exclusively available under
Proteintech Group brand and is not available
to purchase from any other manufacturer.