

# FcZero-rAb® Mouse Activated T Cell Panel

## General Information

**Catalog Number:** PK30059

**Stability and Storage:** 1 year from receipt at 2 to 8°C

**Formulation:** PBS with 0.09% sodium azide and 0.5% BSA

**Applications:** FC

**Reactivity:** Mouse

**Size:** 5x100 ug

## Panel Components

Fluorochrome (ex/em)	Catalog No.	Size	Target	Clone	Isotype	Description
APC-Cyanine7 (650 nm/778 nm)	AY7-FcA65659	100 ug	CD3	17-A2	Rabbit IgG	T cell marker
Coralite Plus 647 (650 nm/660 nm)	CL647-FcA98288	100 ug	CD25	242494H5	Rabbit IgG	Marker of activation
Coralite Plus 488 (493 nm/522 nm)	CL488-FcA98440	100 ug	CD69	250269C11	Rabbit IgG	Marker of activation
Coralite Plus 405 (399 nm/422 nm)	CL405-FcA65655	100 ug	CD4	RM4-4	Rabbit IgG	Helper T cell marker
PE (496, 565 nm/578 nm)	PE-FcA98472-2	100 ug	CD8	242879C10	Rabbit IgG	Cytotoxic T cell marker

### Proteintech Group, Inc.

(HQ in North America)

5500 Pearl Street, Ste 400

Rosemont, IL 60018, USA

P +1 (888) 478-4522 (toll free in USA)

F +1 (773) 598-4321

+1 (847) 928-2189

E proteintech@ptglab.com

### Proteintech Europe

P +44 161 839 3007

F +44 161 241 3103

E europe@ptglab.com

### Proteintech China

E proteintech-CN@ptglab.com

### Proteintech Singapore

P +65 9785 0861

E singapore@ptglab.com

AB/405

FITC/488

PE/555

APC/647

APC-Cyanine7

CD4 (RM4-4)

CD69 (250269C11)

CD8 (242879C10)

CD25 (242494H5)

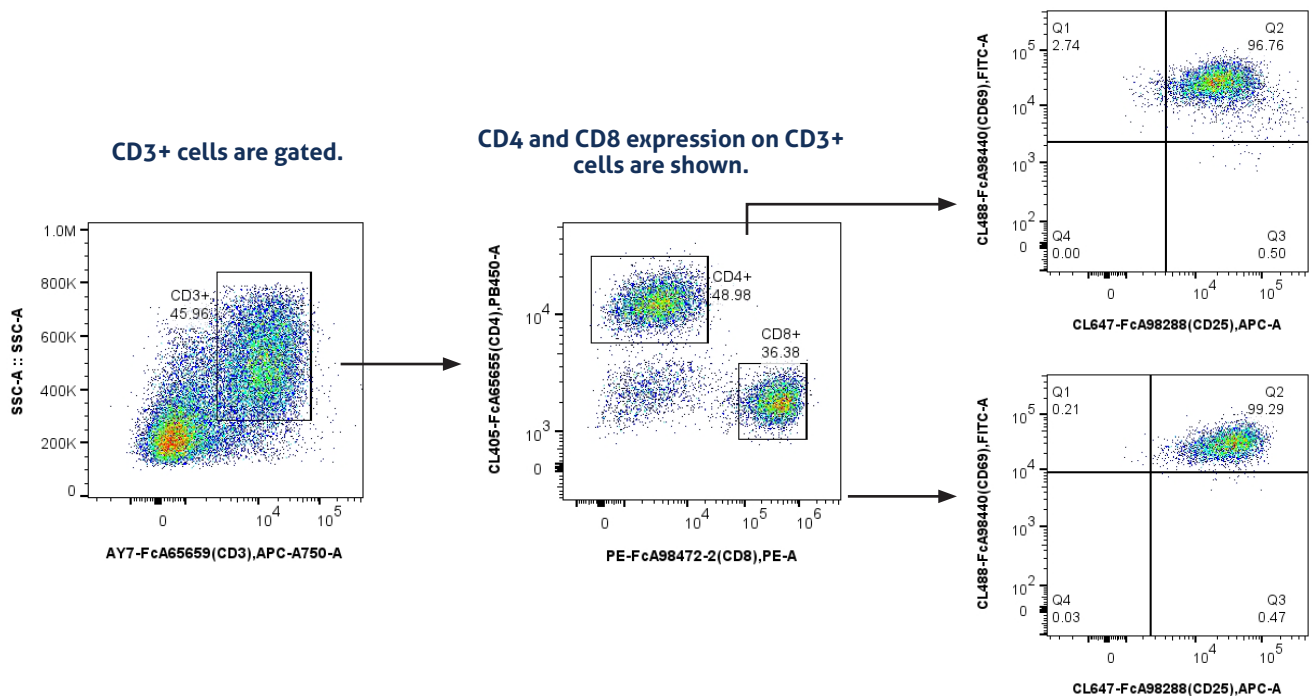
CD3 (17-A2)

## Product Description

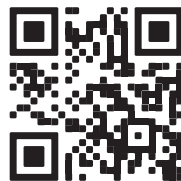
T lymphocytes are immune cells that respond to foreign antigens by secreting cytokines (CD8+ Cytotoxic T cells) and coordinating the immune response (CD4+ Helper T cells).

This panel is designed for the identification of CD3+ T lymphocytes into CD4+ T lymphocyte and CD8+ T lymphocyte subpopulations and the evaluation of these two populations for activation with CD69 and CD25.

## Validation Data *Sample: Anti-mouse CD3/CD28 stimulated mouse splenocytes*



Find more  
Flow Cytometry  
Products



Download the  
Flow Cytometry  
Guide

