

For Research Use Only.  
Not For Use In Diagnostics.

# Multi-rAb CoraLite® Plus 750-Goat Anti-Mouse Recombinant Secondary Antibody (H+L)



Catalog Number:RGAM006

## Information

Catalog Number: RGAM006	Reactivity: Mouse	Clonality: Multiclonal recombinant
Host: Goat	Physical State: Liquid	
Applications: IF, FC, WB (Fluorescent)	Conjugation: CoraLite® Plus 750	

## Recommended Dilutions

1:200-1:1000 for IF and FC  
1:5000-1:20,000 for western blotting

## Fluorophore

CoraLite® Plus 750, Amax=755±4 nm; Emax=780±4 nm

## Safety Notes

This product is for research use only, not for diagnostic or therapeutic use.

## Storage

**Storage:**  
Store at -20°C. Stable for one year after shipment.  
**Storage Buffer:**  
PBS with 50% glycerol, 10 mg/mL BSA, 0.1% Proclin-300, pH 7.4.  
Aliquoting is unnecessary for -20°C storage

## Purity

The antibody was purified from culture media supernatant by immunoaffinity chromatography using Protein G beads.

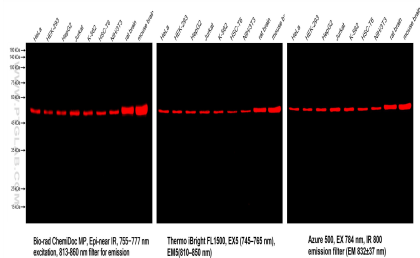
For technical support and original validation data for this product please contact:

T: 1 (888) 4PTGLAB  
(1-888-478-4522)  
(toll free in USA),  
or 1(312) 455-8498  
(outside USA)

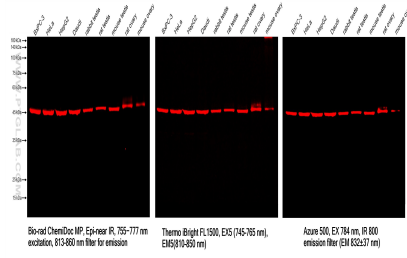
E : proteintech@ptglab.com  
W: ptglab.com

This product is exclusively available under Proteintech Group brand and is not available to purchase from any other manufacturer.

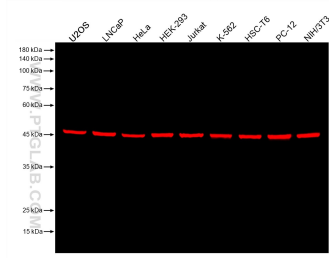
## Selected Validation Data



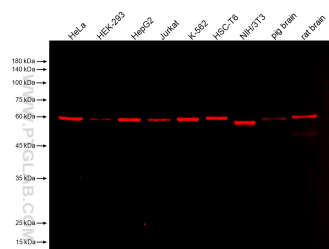
Various lysates were subjected to SDS-PAGE followed by western blot with mouse anti-Beta Tubulin monoclonal antibody (Cat.NO. 66240-1-Ig, isotype IgG2a). Multi-rAb CoraLite® Plus 750-Goat Anti-Mouse Recombinant Secondary Antibody (H+L) RGAM006 was used at 1:10000 for detection. Different devices were used for imaging for the same membrane.



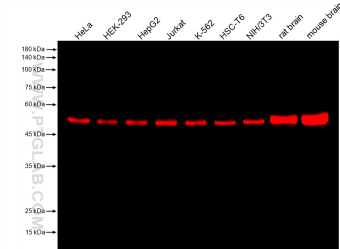
Various lysates were subjected to SDS-PAGE followed by western blot with mouse anti-ZNF174 monoclonal antibody (Cat.NO. 68426-1-Ig, isotype IgG3). Multi-rAb CoraLite® Plus 750-Goat Anti-Mouse Recombinant Secondary Antibody (H+L) RGAM006 was used at 1:10000 for detection. Different devices were used for imaging for the same membrane.



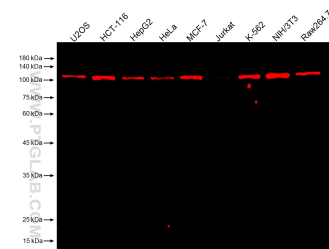
Various lysates were subjected to SDS-PAGE followed by western blot with mouse anti-EIF3E monoclonal antibody (Cat.NO. 67095-1-Ig, isotype IgG1) at dilution of 1:50000. Multi-rAb CoraLite® Plus 750-Goat Anti-Mouse Recombinant Secondary Antibody (H+L) RGAM006 was used at 1:10000 for detection.



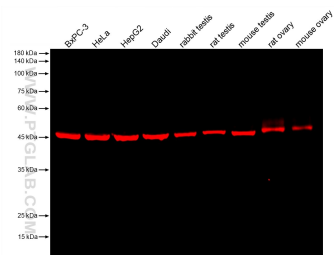
Various lysates were subjected to SDS-PAGE followed by western blot with mouse anti-Catalase monoclonal antibody (Cat.NO. 66765-1-Ig, isotype IgG1) at dilution of 1:10000. Multi-rAb CoraLite® Plus 750-Goat Anti-Mouse Recombinant Secondary Antibody (H+L) RGAM006 was used at 1:10000 for detection.



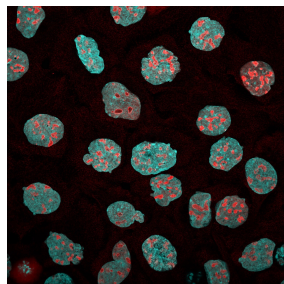
Various lysates were subjected to SDS-PAGE followed by western blot with mouse anti-Beta Tubulin monoclonal antibody (Cat.NO. 66240-1-Ig, isotype IgG2a) at dilution of 1:100000. Multi-rAb CoraLite® Plus 750-Goat Anti-Mouse Recombinant Secondary Antibody (H+L) RGAM006 was used at 1:10000 for detection.



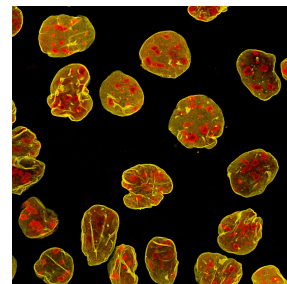
Various lysates were subjected to SDS-PAGE followed by western blot with mouse anti-FAK monoclonal antibody (Cat.NO. 66258-1-Ig, isotype IgG2c) at dilution of 1:5000. Multi-rAb CoraLite® Plus 750-Goat Anti-Mouse Recombinant Secondary Antibody (H+L) RGAM006 was used at 1:10000 for detection.



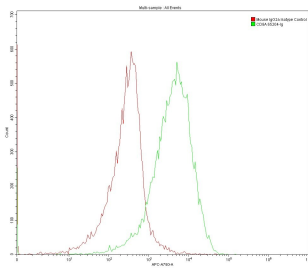
Various lysates were subjected to SDS-PAGE followed by western blot with mouse anti-ZNF174 monoclonal antibody (Cat.NO. 68426-1-Ig, isotype IgG3) at dilution of 1:2000. Multi-rAb CoraLite® Plus 750-Goat Anti-Mouse Recombinant Secondary Antibody (H+L) RGAM006 was used at 1:10000 for detection.



Immunofluorescence of A431 cells: PFA-fixed cells were stained with anti-B23 (60096-1-Ig), followed by Multi-rAb CoraLite® Plus 750-Goat Anti-Mouse Recombinant Secondary Antibody (H+L) (RGAM006, 1:500, red), nuclei stained with DAPI (cyan). Confocal images were acquired with a 63x oil objective and post-processed. Images were recorded at the Core Facility Bioimaging at the Biomedical Center, LMU Munich. Device setting for target: Laser Ex max 764nm, filter Em max 775nm.



Immunofluorescence of A431 cells: PFA-fixed cells were co-stained with mouse anti-B23 (60096-1-Ig) and rabbit anti-Lamin B1 (12987-1-AP), followed by Multi-rAb CoraLite® Plus 750-Goat Anti-Mouse Recombinant Secondary Antibody (H+L) (RGAM006, 1:500, red) and Nano-Secondary srb2GCL555-1 (yellow). Confocal images were acquired with a 63x oil objective and post-processed. Images were recorded at the Core Facility Bioimaging at the Biomedical Center, LMU Munich. Device setting for RGAM006: Laser Ex max 764nm, filter Em max 775nm.



1X10<sup>6</sup> MOLT4 were surface stained with 0.2 ug Anti-Human CD8 (65204-1-Ig, Clone: UCHT4) and Mouse IgG2a Isotype Control 66360-2-Ig. Multi-rAb CoraLite® Plus 647-Goat Anti-Mouse Recombinant Secondary Antibody (H+L) RGAM006 was used at 1:500 for detection.