

For Research Use Only.
Not For Use In Diagnostics.

Multi-rAb™ CoraLite® Plus 750- Goat Anti-Rabbit Recombinant Secondary Antibody (H+L)



Catalog Number: **RGAR006**

Information

Catalog Number:

RGAR006

Host:

Goat

Applications:

WB (Fluorescent), IF, FC

Reactivity:

Rabbit

Physical State:

Liquid

Conjugation:

CoraLite® Plus 750

Clonality:

Multiclonal recombinant

Recommended Dilutions

1:200-1:1000 IF and for FC

1:5000-1:20,000 for western blotting

Fluorophore

CoraLite® Plus 750, Amax=755±4 nm; Emax=780±4 nm

Safety Notes

This product is for research use only, not for diagnostic or therapeutic use.

Storage

Storage:

Store at -20°C. Stable for one year after shipment.

Storage Buffer:

PBS with 50% glycerol, 10 mg/mL BSA, 0.1% Proclin-300, pH 7.4.

Aliquoting is unnecessary for -20°C storage

Purity

The antibody was purified from culture media supernatant by immunoaffinity chromatography using Protein G beads.

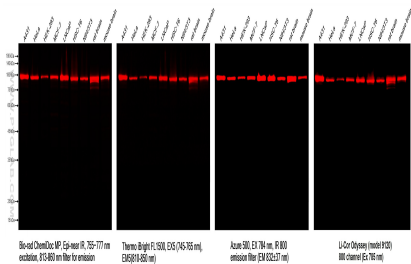
For technical support and original validation data for this product please contact:

T: 1 (888) 4PTGLAB
(1-888-478-4522)
(toll free in USA),
or 1(312) 455-8498
(outside USA)

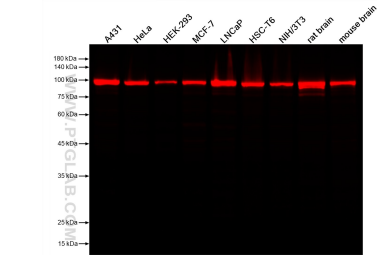
E : proteintech@ptglab.com
W: ptglab.com

This product is exclusively available under Proteintech Group brand and is not available to purchase from any other manufacturer.

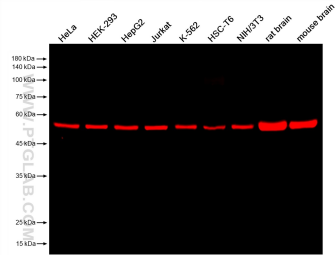
Selected Validation Data



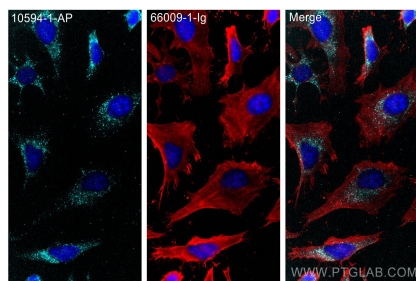
Various lysates were subjected to SDS-PAGE followed by western blot with Rabbit anti-Beta Catenin recombinant antibody (Cat.NO. 80488-1-RR) at dilution of 1:40000. Multi-rAb™ CoraLite® Plus 750-Goat Anti-Rabbit Recombinant Secondary Antibody (H+L) RGAR006 was used at 1:10000 for detection. Different devices were used for imaging for the same membrane.



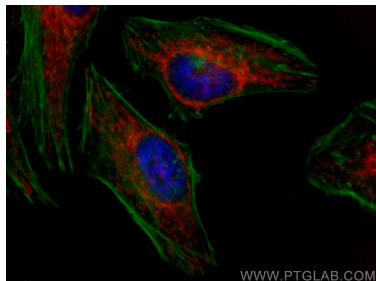
Various lysates were subjected to SDS-PAGE followed by western blot with Rabbit anti-Beta Catenin recombinant antibody (Cat.NO. 80488-1-RR) at dilution of 1:40000. Multi-rAb™ CoraLite® Plus 750-Goat Anti-Rabbit Recombinant Secondary Antibody (H+L) RGAR006 was used at 1:10000 for detection.



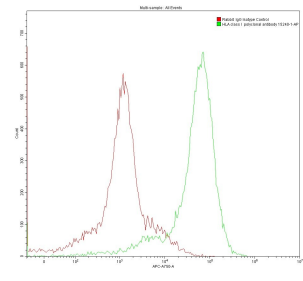
Various lysates were subjected to SDS-PAGE followed by western blot with Rabbit anti-Beta Catenin recombinant antibody (Cat.NO. 80488-1-RR) at dilution of 1:40000. Multi-rAb™ CoraLite® Plus 750-Goat Anti-Rabbit Recombinant Secondary Antibody (H+L) RGAR006 was used at 1:10000 for detection.



Immunofluorescent analysis of (-20°C Methanol) fixed HeLa cells using PEX14 antibody (10594-1-AP) at dilution of 1:200 and Multi-rAb™ CoraLite® Plus 750-Goat Anti-Rabbit Recombinant Secondary Antibody (H+L) (RGAR006). Beta Actin antibody (66009-1-Ig, Clone: 2D4H5).



Immunofluorescent analysis of (4% PFA) fixed HeLa cells using TOM20 antibody (11802-1-AP) at dilution of 1:200 and Multi-rAb™ CoraLite® Plus 750-Goat Anti-Rabbit Recombinant Secondary Antibody (H+L) (RGAR006). CL488-Phalloidin (green).



1X10⁶ MOLT4 were surface stained with 0.2 ug Anti-HLA class I rabbit polyclonal antibody (15240-1-AP) and Rabbit IgG Isotype Control 30000-0-AP. Multi-rAb™ CoraLite® Plus 750-Goat Anti-Rabbit Recombinant Secondary Antibody (H+L) RGAR006 was used at 1:500 for detection.