

For Research Use Only

# Multi-rAb™ KIF5A Multi-Recombinant antibody

Catalog Number: RMX00017



## Basic Information

Catalog Number:

RMX00017

Size:

100ul, Concentration: 600 µg/ml by Nanodrop;

Source:

Rabbit

Isotype:

IgG

GenBank Accession Number:

BC146670

GeneID (NCBI):

3798

UNIPROT ID:

Q12840

Full Name:

kinesin family member 5A

Calculated MW:

1032 aa, 117 kDa

Observed MW:

118-120 kDa

Purification Method:

N/A

Recommended Dilutions:

WB 1:2000-1:10000

IP 0.5-4.0 µg for 1.0-3.0 mg of total protein lysate

IHC 1:500-1:2000

IF/ICC 1:200-1:800

## Applications

Tested Applications:

WB, IHC, IF/ICC, IP, ELISA

Species Specificity:

human, mouse, rat

**Note-IHC: suggested antigen retrieval with TE buffer pH 9.0; (\*) Alternatively, antigen retrieval may be performed with citrate buffer pH 6.0**

Positive Controls:

WB : SH-SY5Y cells, 87-MG cells, mouse brain tissue, rat brain tissue

IP : U-87 MG cells,

IHC : mouse brain tissue,

IF/ICC : PC-12 cells,

## Background Information

Kinesin superfamily proteins (KIFs) are microtubule-based molecular motors essential for the intracellular transport of various cargos, including organelles, proteins, and RNAs. KIF 5A is expressed exclusively in neurons and transports neuronal cargoes into axons and dendrites. KIF5A mutations have been associated with Charcot-Marie-Tooth Type 2, an axonal peripheral neuropathy characterized by progressive loss of peripheral sensation and muscle wasting.

## Storage

Storage:

Store at -20°C. Stable for one year after shipment.

Storage Buffer:

PBS with 0.02% sodium azide and 50% glycerol, pH7.3

Aliquoting is unnecessary for -20°C storage

\*\*\* 20ul sizes contain 0.1% BSA

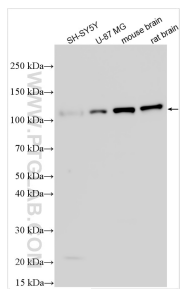
For technical support and original validation data for this product please contact:

T: 1 (888) 4PTGLAB (1-888-478-4522) (toll free in USA), or 1(312) 455-8498 (outside USA)

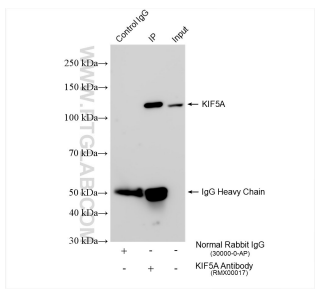
E: [proteintech@ptglab.com](mailto:proteintech@ptglab.com)  
W: [ptglab.com](http://ptglab.com)

This product is exclusively available under Proteintech Group brand and is not available to purchase from any other manufacturer.

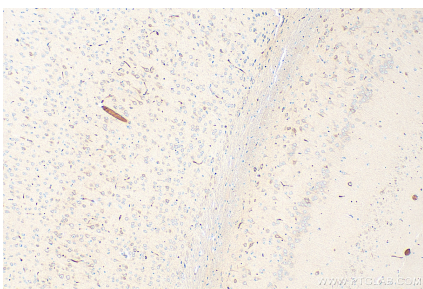
Selected Validation Data



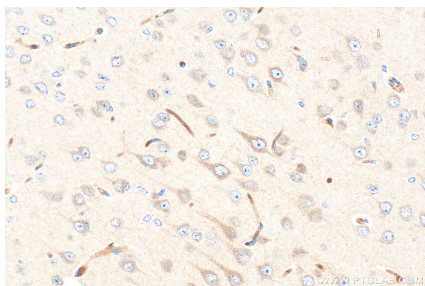
Various lysates were subjected to SDS PAGE followed by western blot with RMX00017 (KIF5A antibody) at dilution of 1:5000 incubated at room temperature for 1.5 hours.



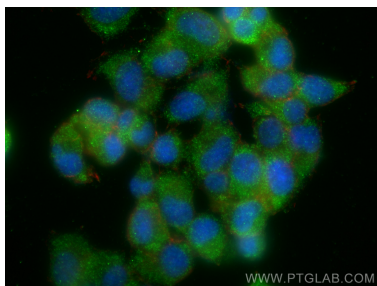
IP result of anti-KIF5A (IP: RMX00017, 4ug; Detection: RMX00017 1:4000) with U-87 MG cells lysate 1520 ug.



Immunohistochemical analysis of paraffin-embedded mouse brain tissue slide using RMX00017 (KIF5A antibody) at dilution of 1:1000 (under 10x lens). Heat mediated antigen retrieval with Tris-EDTA buffer (pH 9.0).



Immunohistochemical analysis of paraffin-embedded mouse brain tissue slide using RMX00017 (KIF5A antibody) at dilution of 1:1000 (under 40x lens). Heat mediated antigen retrieval with Tris-EDTA buffer (pH 9.0).



Immunofluorescent analysis of (-20°C Ethanol) fixed PC-12 cells using KIF5A antibody (RMX00017) at dilution of 1:400 and CoraLite® 488-Conjugated Goat Anti-Rabbit IgG(H+L) (SA00013-2), CL594-Phalloidin (red).