

For Research Use Only

Multi-rAb™ CD107a / LAMP1 Multi-Recombinant antibody

Catalog Number: RMX00025



Basic Information

Catalog Number: RMX00025	GenBank Accession Number: NM_005561.4	Purification Method: N/A
Size: 100ul , Concentration: 1000 µg/ml by Nanodrop;	GeneID (NCBI): 3916	Recommended Dilutions: WB: 1:5000-1:50000 IF/ICC: 1:50-1:500
Source: Rabbit	ENSEMBL Gene ID: ENSG00000185896	
Isotype: IgG	UNIPROT ID: P11279-1	
	Full Name: lysosomal-associated membrane protein 1	
	Calculated MW: 45 kDa	
	Observed MW: 40-48 kDa, 90-120 kDa	

Applications

Tested Applications: WB, IF/ICC, ELISA	Positive Controls:
Species Specificity: human	WB : HeLa cells, IF/ICC : HepG2 cells,

Background Information

LAMP1 (CD107a) is a heavily glycosylated membrane protein enriched in the lysosomal membrane. LAMP1 is extensively glycosylated with asparagine-linked oligosaccharides which protect it from intracellular proteolysis (PMID: 10521503). Although LAMP1 is expressed largely in the endosome-lysosomal membrane of cells, it is also found on the plasma membrane (PMID: 16168398). Elevated LAMP1 expression at the cell surface has also been detected during platelet and granulocytic cell activation, as well as in some tumor cells (PMID: 29085473). LAMP1 functions to provide selectins with carbohydrate ligands. This protein has also been shown to be a marker of degranulation on lymphocytes such as CD8+ and NK cells and may also play a role in tumor cell differentiation and metastasis (PMID: 18835598; 29085473; 9426697).

Storage

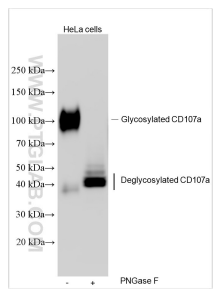
Storage:
Store at -20°C. Stable for one year after shipment.
Storage Buffer:
PBS with 0.02% sodium azide and 50% glycerol.
Aliquoting is unnecessary for -20° C storage

*** 20ul sizes contain 0.1% BSA

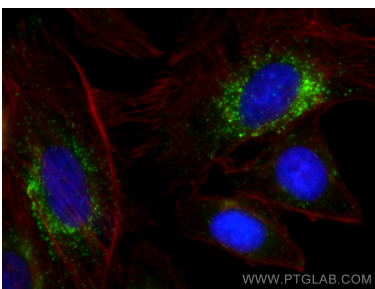
For technical support and original validation data for this product please contact:
T: 1 (888) 4PTGLAB (1-888-478-4522) (toll free in USA), or 1(312) 455-8498 (outside USA)
E: proteintech@ptglab.com
W: ptglab.com

This product is exclusively available under Proteintech Group brand and is not available to purchase from any other manufacturer.

Selected Validation Data



Untreated and PNGaseF-treated HeLa cell lysates were subjected to SDS PAGE followed by western blot with RMX00025 (CD107a / LAMP1 antibody) at dilution of 1:20000 incubated at room temperature for 1.5 hours.



Immunofluorescent analysis of (4% PFA) fixed HepG2 cells using CD107a / LAMP1 antibody (RMX00025) at dilution of 1:200 and CoraLite® 488-Conjugated Goat Anti-Rabbit IgG(H+L) (SA00013-2), CL594-phalloidin (red).