

For Research Use Only

Multi-rAb® RAB7A Multi-Recombinant antibody

Catalog Number: RMX00029



Basic Information

Catalog Number:

RMX00029

Size:

100ul, Concentration: 1000 µg/ml by Nanodrop;

Source:

Rabbit

Isotype:

IgG

GenBank Accession Number:

NM_004637

GeneID (NCBI):

7879

UNIPROT ID:

P51149

Full Name:

RAB7A, member RAS oncogene family

Calculated MW:

23 kDa

Observed MW:

23 kDa

Purification Method:

N/A

Recommended Dilutions:

WB: 1:5000-1:50000

IP: 0.5-4.0 ug for 1.0-3.0 mg of total protein lysate

IHC: 1:500-1:2000

IF/ICC: 1:200-1:800

Applications

Tested Applications:

WB, IHC, IF/ICC, IP, ELISA

Species Specificity:

human, mouse, rat

Note-IHC: suggested antigen retrieval with TE buffer pH 9.0; (*) Alternatively, antigen retrieval may be performed with citrate buffer pH 6.0

Positive Controls:

WB: A431 cells, SH-SY5Y cells, mouse brain tissue, rat brain tissue

IP: mouse brain tissue, SH-SY5Y cells

IHC: mouse kidney tissue,

IF/ICC: HeLa cells,

Background Information

RAB7A, also named as RAB7, belongs to the small GTPase superfamily and Rab family. It is involved in late endocytic transport. RAB7A contributes to the maturation of phagosomes (acidification). Defects in RAB7A are the cause of Charcot-Marie-Tooth disease type 2B (CMT2B). This antibody is specific to RAB7A.

Storage

Storage:

Store at -20°C. Stable for one year after shipment.

Storage Buffer:

PBS with 0.02% sodium azide and 50% glycerol.

Aliquoting is unnecessary for -20°C storage

*** 20ul sizes contain 0.1% BSA

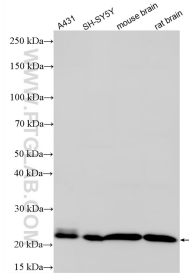
For technical support and original validation data for this product please contact:

T: 1 (888) 4PTGLAB (1-888-478-4522) (toll free in USA), or 1(312) 455-8498 (outside USA)

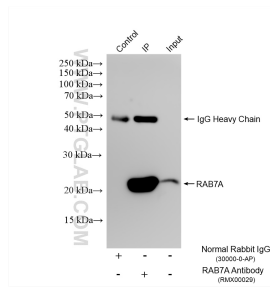
E: proteintech@ptglab.com
W: ptglab.com

This product is exclusively available under Proteintech Group brand and is not available to purchase from any other manufacturer.

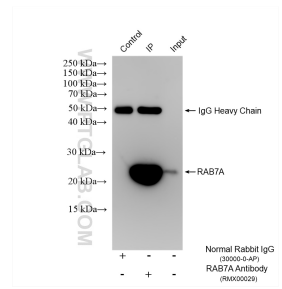
Selected Validation Data



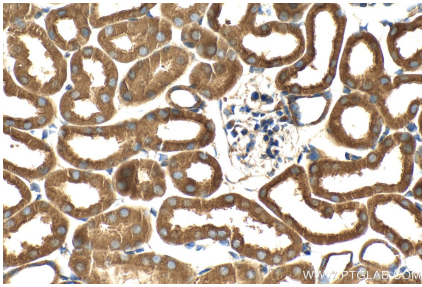
Various lysates were subjected to SDS PAGE followed by western blot with RMX00029 (RAB7A antibody) at dilution of 1:10000 incubated at room temperature for 1.5 hours.



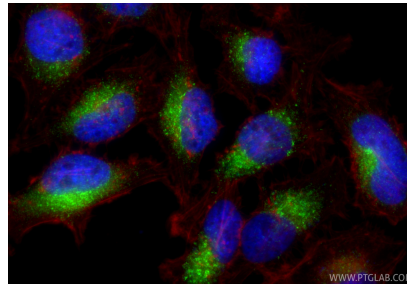
IP result of anti-RAB7A (IP:RMX00029, 4 μ g; Detection:RMX00029 1:1000) with mouse brain tissue lysate 1960 μ g.



IP result of anti-RAB7A (IP:RMX00029, 4 μ g; Detection:RMX00029 1:5000) with SH-SY5Y cells lysate 1480 μ g.



Immunohistochemical analysis of paraffin-embedded mouse kidney tissue slide using RMX00029 (RAB7A antibody) at dilution of 1:1000 (under 40x lens). Heat mediated antigen retrieval with Tris-EDTA buffer (pH 9.0).



Immunofluorescent analysis of (4% PFA) fixed HeLa cells using RAB7A antibody (RMX00029) at dilution of 1:400 and CoraLite@488-Conjugated Goat Anti-Rabbit IgG(H+L) (SA00013-2), CL594-Phalloidin (red).