

For Research Use Only

# Multi-rAb® DIAPH3 Multi-Recombinant antibody

Catalog Number: **RMX00041**



## Basic Information

Catalog Number:

RMX00041

Size:

100ul , Concentration: 980 µg/ml by Nanodrop;

Source:

Rabbit

Isotype:

IgG

GenBank Accession Number:

BC048963

GeneID (NCBI):

81624

UNIPROT ID:

Q9NSV4

Full Name:

diaphanous homolog 3 (Drosophila)

Calculated MW:

137 kDa

Observed MW:

137 kDa

Purification Method:

N/A

Recommended Dilutions:

WB: 1:2000-1:16000

IP: 0.5-4.0 µg for 1.0-3.0 mg of total protein lysate

IF/ICC: 1:50-1:500

## Applications

Tested Applications:

WB, IF/ICC, IP, ELISA

Species Specificity:

human

Positive Controls:

WB : HEK-293 cells, HeLa cells

IP : HeLa cells,

IF/ICC : HeLa cells,

## Background Information

DIAPH3 is also referred as diaphanous-related formin-3 which binds to GTP-bound form of Rho and to profilin, acts in a Rho-dependent manner to recruit profilin to the membrane. It is required for cytokinesis, stress fiber formation, and transcriptional activation of the serum response factor. Seven isoforms of DIAPH3 exist due to the alternative splicing. Recently it has been reported that dimerization and actin assembly activity of DIAPH3 isoforms 1 and 7 are essential for induction of specific cell protrusions. It may propose that isoform-selective actin assembly by DIAPH3 exerts specific and differentially regulated functions during cell adhesion and motility.

## Storage

Storage:

Store at -20°C. Stable for one year after shipment.

Storage Buffer:

PBS with 0.02% sodium azide and 50% glycerol.

Aliquoting is unnecessary for -20°C storage

**\*\*\* 20ul sizes contain 0.1% BSA**

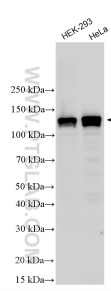
For technical support and original validation data for this product please contact:

T: 1 (888) 4PTGLAB (1-888-478-4522) (toll free in USA), or 1(312) 455-8498 (outside USA)

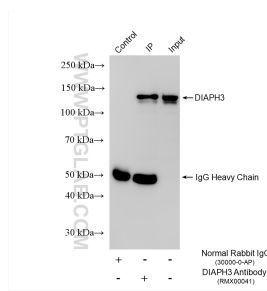
E: [proteintech@ptglab.com](mailto:proteintech@ptglab.com)  
W: [ptglab.com](http://ptglab.com)

**This product is exclusively available under Proteintech Group brand and is not available to purchase from any other manufacturer.**

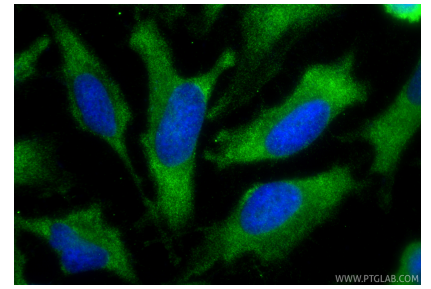
## Selected Validation Data



Various lysates were subjected to SDS PAGE followed by western blot with RMX00041 (DIAPH3 antibody) at dilution of 1:8000 incubated at room temperature for 1.5 hours.



IP result of anti-DIAPH3 (IP:RMX00041, 4 $\mu$ g; Detection:RMX00041 1:8000) with HeLa cells lysate 1080  $\mu$ g.



Immunofluorescent analysis of (-20°C Ethanol) fixed HeLa cells using DIAPH3 antibody (RMX00041) at dilution of 1:200 and CoraLite® 488-Conjugated Goat Anti-Rabbit IgG(H+L) (SA00013-2).