

For Research Use Only

# Multi-rAb® TAGLN Multi-Recombinant antibody

Catalog Number: RMX00045



## Basic Information

<b>Catalog Number:</b> RMX00045	<b>GenBank Accession Number:</b> BC004927	<b>Purification Method:</b> N/A
<b>Size:</b> 100ul , Concentration: 1030 µg/ml by Nanodrop;	<b>GeneID (NCBI):</b> 6876	<b>Recommended Dilutions:</b> WB: 1:20000-1:100000 IHC: 1:2000-1:8000 IF-P: 1:50-1:500
<b>Source:</b> Rabbit	<b>UNIPROT ID:</b> Q01995	
<b>Isotype:</b> IgG	<b>Full Name:</b> transgelin	
	<b>Calculated MW:</b> 22 kDa	
	<b>Observed MW:</b> 19-22 kDa	

## Applications

### Tested Applications:

WB, IHC, IF-P, ELISA

### Species Specificity:

human, mouse, rat

**Note-IHC: suggested antigen retrieval with TE buffer pH 9.0; (\*) Alternatively, antigen retrieval may be performed with citrate buffer pH 6.0**

### Positive Controls:

WB : mouse colon tissue, mouse stomach tissue, rat colon tissue, rat stomach tissue

IHC : mouse heart tissue, human kidney tissue

IF-P : mouse heart tissue,

## Background Information

The transgelin family is a protein group belonging to the 22kd actin-related calponin superfamily. Of all three isoforms, transgelin 1 is the best characterized. Transgelin 1, or SM22alpha, is a specific marker for differentiated smooth muscle cells. Transgelin 2, also known as SM22 beta, is expressed by both smooth and non-smooth muscle cells in a temporally and spatially regulated pattern. Transgelin 3, also known as NP25, is only found in highly differentiated neuronal cells. This antibody can cross-react with other two transgenes based on the sequence similarity.

## Storage

### Storage:

Store at -20°C. Stable for one year after shipment.

### Storage Buffer:

PBS with 0.02% sodium azide and 50% glycerol.

Aliquoting is unnecessary for -20°C storage

\*\*\* 20ul sizes contain 0.1% BSA

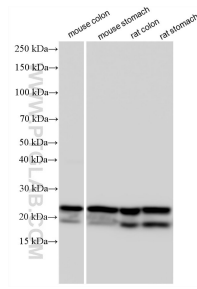
For technical support and original validation data for this product please contact:

T: 1 (888) 4PTGLAB (1-888-478-4522) (toll free in USA), or 1(312) 455-8498 (outside USA)

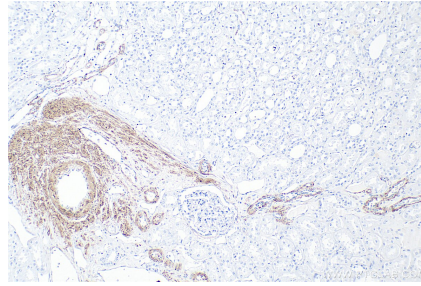
E: proteintech@ptglab.com  
W: ptglab.com

This product is exclusively available under Proteintech Group brand and is not available to purchase from any other manufacturer.

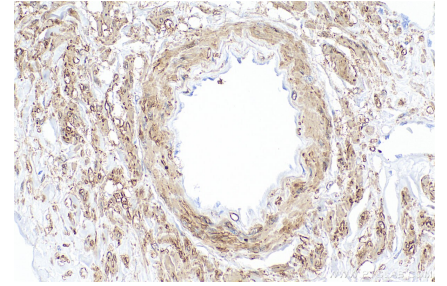
## Selected Validation Data



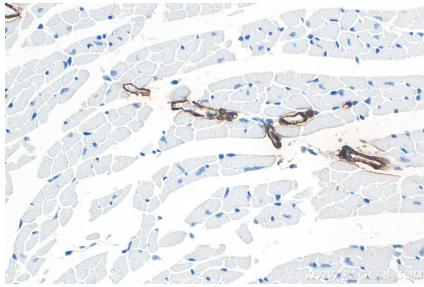
Various lysates were subjected to SDS PAGE followed by western blot with RMX00045 (TAGLN antibody) at dilution of 1:60000 incubated at room temperature for 1.5 hours.



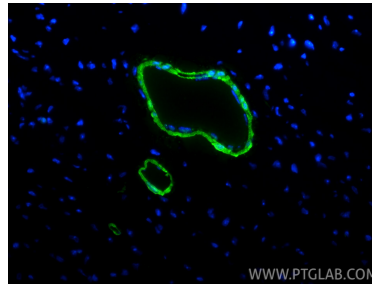
Immunohistochemical analysis of paraffin-embedded human kidney tissue slide using RMX00045 (TAGLN antibody) at dilution of 1:4000 (under 10x lens). Heat mediated antigen retrieval with Tris-EDTA buffer (pH 9.0).



Immunohistochemical analysis of paraffin-embedded human kidney tissue slide using RMX00045 (TAGLN antibody) at dilution of 1:4000 (under 40x lens). Heat mediated antigen retrieval with Tris-EDTA buffer (pH 9.0).



Immunohistochemical analysis of paraffin-embedded mouse heart tissue slide using RMX00045 (TAGLN antibody) at dilution of 1:4000 (under 40x lens). Heat mediated antigen retrieval with Tris-EDTA buffer (pH 9.0).



Immunofluorescent analysis of (4% PFA) fixed paraffin-embedded mouse heart tissue using TAGLN antibody (RMX00045) at dilution of 1:200 and CoraLite® 488-Conjugated Goat Anti-Rabbit IgG(H+L) (SA00013-2). Heat mediated antigen retrieval with Tris-EDTA buffer (pH 9.0).