

For Research Use Only

Multi-rAb® RPL10A Multi-Recombinant antibody

Catalog Number: RMX00046



Basic Information

Catalog Number: RMX00046	GenBank Accession Number: BC006791	Purification Method: N/A
Size: 100ul , Concentration: 1000 µg/ml by Nanodrop;	GeneID (NCBI): 4736	Recommended Dilutions: WB: 1:5000-1:50000 IP: 0.5-4.0 ug for 1.0-3.0 mg of total protein lysate IHC: 1:250-1:1000 IF/ICC: 1:200-1:800
Source: Rabbit	UNIPROT ID: P62906	
Isotype: IgG	Full Name: ribosomal protein L10a	
	Calculated MW: 25 kDa	
	Observed MW: 25 kDa	

Applications

Tested Applications:
WB, IHC, IF/ICC, IP, ELISA

Species Specificity:
human, mouse, rat

Note-IHC: suggested antigen retrieval with TE buffer pH 9.0; (*) Alternatively, antigen retrieval may be performed with citrate buffer pH 6.0

Positive Controls:

WB : HeLa cells, HepG2 cells, mouse spleen tissue, rat spleen tissue

IP : HepG2 cells,

IHC : mouse liver tissue,

IF/ICC : HepG2 cells,

Background Information

RPL10A (Ribosomal Protein L10a) is a component of the 60S subunit of the ribosome and belongs to the L1P family of ribosomal proteins. It is located in the cytoplasm. RPL10A is ubiquitously expressed in various tissues, it plays a crucial role in ribosome biogenesis and protein synthesis. In addition to its role in protein synthesis, RPL10A has been implicated in cell proliferation, embryogenesis, and organogenesis. PMID: 29953919

Storage

Storage:
Store at -20°C. Stable for one year after shipment.

Storage Buffer:
PBS with 0.02% sodium azide and 50% glycerol.

Aliquoting is unnecessary for -20°C storage

*** 20ul sizes contain 0.1% BSA

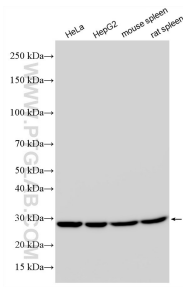
For technical support and original validation data for this product please contact:

T: 1 (888) 4PTGLAB (1-888-478-4522) (toll free in USA), or 1(312) 455-8498 (outside USA)

E: proteintech@ptglab.com
W: ptglab.com

This product is exclusively available under Proteintech Group brand and is not available to purchase from any other manufacturer.

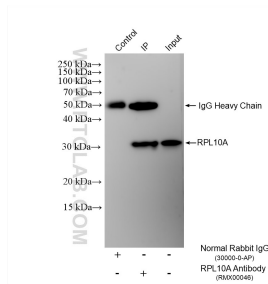
Selected Validation Data



Various lysates were subjected to SDS PAGE followed by western blot with RMX00046 (RPL10A antibody) at dilution of 1:15000 incubated at room temperature for 1.5 hours.

Immunohistochemical analysis of paraffin-embedded mouse liver tissue slide using RMX00046 (RPL10A antibody) at dilution of 1:500 (under 10x lens). Heat mediated antigen retrieval with Tris-EDTA buffer (pH 9.0).

Immunofluorescent analysis of (-20°C Ethanol) fixed HepG2 cells using RPL10A antibody (RMX00046) at dilution of 1:400 and CoraLite®488-Conjugated Goat Anti-Rabbit IgG(H+L) (SA00013-2).



IP result of anti-RPL10A (IP: RMX00046, 4ug; Detection: RMX00046 1:10000) with HepG2 cells lysate 1600 ug.