

For Research Use Only

Multi-rAb® TORC2 Multi-Recombinant antibody

Catalog Number: RMX00047



Basic Information

Catalog Number: RMX00047	GenBank Accession Number: BC053562	Purification Method: N/A
Size: 100ul , Concentration: 920 µg/ml by Nanodrop;	GeneID (NCBI): 200186	Recommended Dilutions: WB: 1:5000-1:50000 IHC: 1:400-1:1600 IF/ICC: 1:50-1:500
Source: Rabbit	UNIPROT ID: Q53ETO	
Isotype: IgG	Full Name: CREB regulated transcription coactivator 2	
	Calculated MW: 693 aa, 73 kDa	
	Observed MW: 80 kDa	

Applications

Tested Applications:
WB, IHC, IF/ICC, ELISA

Species Specificity:
human

Note-IHC: suggested antigen retrieval with TE buffer pH 9.0; (*) Alternatively, antigen retrieval may be performed with citrate buffer pH 6.0

Positive Controls:

WB : A2780 cells, HEK-293 cells, HepG2 cells, Ramos cells

IHC : human skin cancer tissue,

IF/ICC : HepG2 cells,

Background Information

CRTC2, also named as TORC2, belongs to the TORC family. It is a transcriptional coactivator for CREB1 which activates transcription through both consensus and variant cAMP response element (CRE) sites. It acts as a coactivator, in the SIK/TORC signaling pathway, being active when dephosphorylated and acts independently of CREB1 'Ser-133' phosphorylation. CRTC2 enhances the interaction of CREB1 with TAF4. It regulates gluconeogenesis as a component of the LKB1/AMPK/TORC2 signaling pathway. CRTC2 regulates the expression of specific genes such as the steroidogenic gene, StAR. TORC2 was recently shown to be an important regulator of gluconeogenesis in the livers of mammals. It is one of the other key regulators of CRE-dependent MIE gene expression in NT2 cells. This regulation is linked to VIP-induced TORC2 dephosphorylation and translocation to the nucleus. (PMID: 19369332, 20504934).

Storage

Storage:
Store at -20°C. Stable for one year after shipment.

Storage Buffer:
PBS with 0.02% sodium azide and 50% glycerol.

Aliquoting is unnecessary for -20°C storage

***** 20ul sizes contain 0.1%BSA**

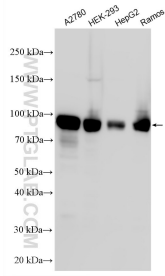
For technical support and original validation data for this product please contact:

T: 1 (888) 4PTGLAB (1-888-478-4522) (toll free in USA), or 1(312) 455-8498 (outside USA)

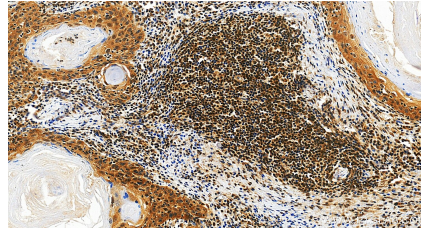
E: proteintech@ptglab.com
W: ptglab.com

This product is exclusively available under Proteintech Group brand and is not available to purchase from any other manufacturer.

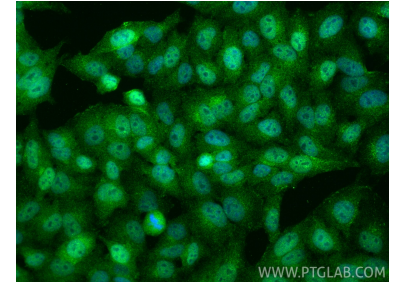
Selected Validation Data



Various lysates were subjected to SDS PAGE followed by western blot with RMX00047 (TORC2 antibody) at dilution of 1:15000 incubated at room temperature for 1.5 hours.



Immunohistochemical analysis of paraffin-embedded human skin cancer tissue slide using RMX00047 (CRTC2,TORC2 antibody) at dilution of 1:800 (under 20x lens). Heat mediated antigen retrieval with Tris-EDTA buffer (pH 9.0).



Immunofluorescent analysis of (4% PFA) fixed HepG2 cells using CRTC2,TORC2 antibody (RMX00047) at dilution of 1:200 and CoraLite® 488-Conjugated Goat Anti-Rabbit IgG(H+L) (SA00013-2).