

For Research Use Only

Multi-rAb® CORO1A Multi-Recombinant antibody

Catalog Number: RMX00049



Basic Information

Catalog Number:

RMX00049

Size:

100ul, Concentration: 1010 µg/ml by Nanodrop;

Source:

Rabbit

Isotype:

IgG

GenBank Accession Number:

BC110374

GeneID (NCBI):

11151

UNIPROT ID:

P31146

Full Name:

coronin, actin binding protein, 1A

Calculated MW:

461 aa, 51 kDa

Observed MW:

57 kDa

Purification Method:

N/A

Recommended Dilutions:

WB: 1:5000-1:50000

IP: 0.5-4.0 ug for 1.0-3.0 mg of total protein lysate

IHC: 1:50-1:500

IF-P: 1:50-1:500

Applications

Tested Applications:

WB, IHC, IF-P, IP, ELISA

Species Specificity:

human, mouse, rat

Note-IHC: suggested antigen retrieval with TE buffer pH 9.0; (*) Alternatively, antigen retrieval may be performed with citrate buffer pH 6.0

Positive Controls:

WB: Jurkat cells, mouse brain tissue, mouse thymus tissue, rat thymus tissue

IP: mouse brain tissue,

IHC: mouse spleen tissue,

IF-P: mouse spleen tissue,

Background Information

CORO1A also known as TACO, belongs to the WD repeat coronin family. CORO1A is recruited to phagosomes and actively retained by surviving mycobacteria and is usually released before phagosome fusion with or maturation into lysosomes. CORO1A is expressed in the brain, thymus, spleen, bone marrow, and lymph nodes. Mutations in CORO1A cause Immunodeficiency 8 with lymphoproliferation (IMD8)(PMID: 10338208).

Storage

Storage:

Store at -20°C. Stable for one year after shipment.

Storage Buffer:

PBS with 0.02% sodium azide and 50% glycerol.

Aliquoting is unnecessary for -20°C storage

*** 20ul sizes contain 0.1% BSA

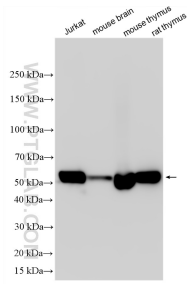
For technical support and original validation data for this product please contact:

T: 1 (888) 4PTGLAB (1-888-478-4522) (toll free in USA), or 1(312) 455-8498 (outside USA)

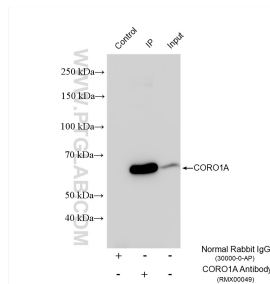
E: proteintech@ptglab.com
W: ptglab.com

This product is exclusively available under Proteintech Group brand and is not available to purchase from any other manufacturer.

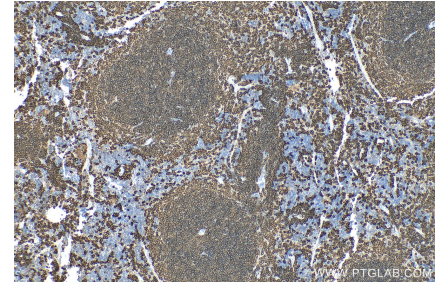
Selected Validation Data



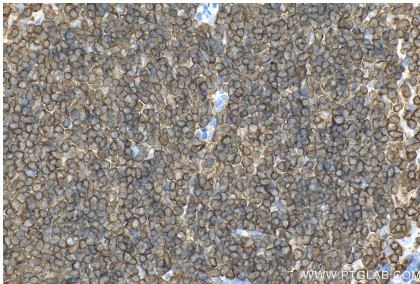
Various lysates were subjected to SDS PAGE followed by western blot with RMX00049 (CORO1A antibody) at dilution of 1:20000 incubated at room temperature for 1.5 hours.



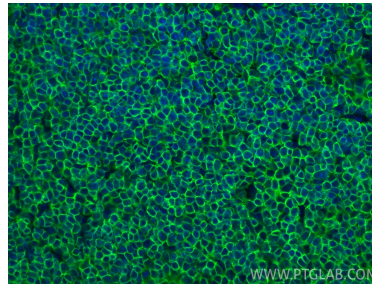
IP result of anti-CORO1A (IP:RMX00049, 4ug; Detection:RMX00049 1:20000) with mouse brain tissue lysate 1960 ug.



Immunohistochemical analysis of paraffin-embedded mouse spleen tissue slide using RMX00049 (CORO1A antibody) at dilution of 1:200 (under 10x lens). Heat mediated antigen retrieval with Tris-EDTA buffer (pH 9.0).



Immunohistochemical analysis of paraffin-embedded mouse spleen tissue slide using RMX00049 (CORO1A antibody) at dilution of 1:200 (under 40x lens). Heat mediated antigen retrieval with Tris-EDTA buffer (pH 9.0).



Immunofluorescent analysis of (4% PFA) fixed paraffin-embedded mouse spleen tissue using CORO1A antibody (RMX00049) at dilution of 1:200 and CoraLite® 488-Conjugated Goat Anti-Rabbit IgG(H+L) (SA00013-2). Heat mediated antigen retrieval with Tris-EDTA buffer (pH 9.0).