

For Research Use Only

Multi-rAb® CCR2a-specific Multi-Recombinant antibody

Catalog Number: RMX00052



Basic Information

Catalog Number: RMX00052	GenBank Accession Number: NM_000647	Purification Method: N/A
Size: 100ul , Concentration: 1070 µg/ml by Nanodrop;	GeneID (NCBI): 729230	Recommended Dilutions: WB: 1:5000-1:50000 IF/ICC: 1:50-1:500
Source: Rabbit	UNIPROT ID: P41597	
Isotype: IgG	Full Name: chemokine (C-C motif) receptor 2	
	Calculated MW: 42 kDa	
	Observed MW: 37-42 kDa	

Applications

Tested Applications:
WB, IF/ICC, ELISA

Species Specificity:
human, mouse, rat

Positive Controls:

WB : A431 cells, mouse skeletal muscle tissue, HEK-293 cells, rat skeletal muscle tissue

IF/ICC : THP-1 cells,

Background Information

CCR2 encodes a receptor for MCP1, functioning in inflammatory processes, tumor infiltration, and monocyte invasion of artery walls in atherosclerosis. There are two isoforms of CCR2, CCR2A and CCR2B. CCR2 isoforms were expressed by different cell subsets in both normal and IIM muscle. CCR2A was expressed in vessel walls and by some mononuclear cells, especially in cells involved in partial invasion in PM and IBM. CCR2B expression was observed in all satellite cells, in the muscular domain of neuromuscular junctions, and in some regenerative fibers of IIM, but not in inflammatory exudates. The sequences of the two isoforms are different from 314-374 aa. This antibody 16153-1-AP is raised against the peptide of 344-358 amino acids of CCR2a. It is specific to CCR2a.

Storage

Storage:
Store at -20°C. Stable for one year after shipment.

Storage Buffer:
PBS with 0.02% sodium azide and 50% glycerol.

Aliquoting is unnecessary for -20°C storage

*** 20ul sizes contain 0.1% BSA

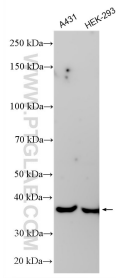
For technical support and original validation data for this product please contact:

T: 1 (888) 4PTGLAB (1-888-478-4522) (toll free in USA), or 1(312) 455-8498 (outside USA)

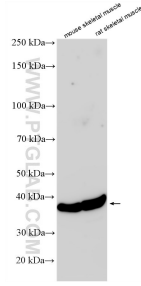
E: proteintech@ptglab.com
W: ptglab.com

This product is exclusively available under Proteintech Group brand and is not available to purchase from any other manufacturer.

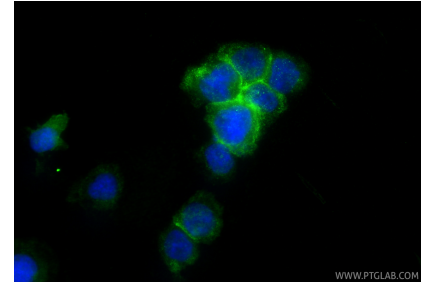
Selected Validation Data



Various lysates were subjected to SDS PAGE followed by western blot with RMX00052 (CCR2a-specific antibody) at dilution of 1:10000 incubated at room temperature for 1.5 hours.



Various lysates were subjected to SDS PAGE followed by western blot with RMX00052 (CCR2a-specific antibody) at dilution of 1:10000 incubated at room temperature for 1.5 hours.



Immunofluorescent analysis of (4% PFA) fixed THP-1 cells using CCR2a-specific antibody (RMX00052) at dilution of 1:200 and CoraLite® 488-Conjugated Goat Anti-Rabbit IgG(H+L) (SA00013-2).