

For Research Use Only

Multi-rAb® SAMHD1 Multi-Recombinant antibody

Catalog Number: RMX00060



Basic Information

Catalog Number:

RMX00060

Size:

100ul , Concentration: 1000 µg/ml by Nanodrop;

Source:

Rabbit

Isotype:

IgG

GenBank Accession Number:

BC036450

GeneID (NCBI):

25939

UNIPROT ID:

Q9Y3Z3

Full Name:

SAM domain and HD domain 1

Calculated MW:

626 aa, 72 kDa

Observed MW:

72 kDa

Purification Method:

N/A

Recommended Dilutions:

WB: 1:5000-1:50000

IP: 0.5-4.0 ug for 1.0-3.0 mg of total protein lysate

IHC: 1:500-1:2000

IF/ICC: 1:250-1:1000

FC (Intra): 0.25 ug per 10⁶ cells in a 100 µl suspension

Applications

Tested Applications:

WB, IHC, IF/ICC, FC (Intra), IP, ELISA

Species Specificity:

human

Note-IHC: suggested antigen retrieval with TE buffer pH 9.0; (*) Alternatively, antigen retrieval may be performed with citrate buffer pH 6.0

Positive Controls:

WB : HeLa cells, K-562 cells

IP : K-562 cells, HeLa cells

IHC : human placenta tissue,

IF/ICC : HepG2 cells,

FC (Intra) : K-562 cells,

Background Information

SAMHD1, highly expressed by monocytes and monocyte-derived dendritic cells and by monocyte-derived macrophages at a lower extent, is reported as an HIV-1 restriction factor that inhibits the early step of the HIV-1 life cycle. Vpx (virus-like particles containing viral protein X) could overcome this block by interacting with SAMHD1, inducing proteasome-dependent degradation of SAMHD1. Mutations in SAMHD1 cause Aicardi-Goutières syndrome, a genetic encephalopathy with presumed immune pathogenesis. Three alternatively spliced transcripts encoding different isoforms have been described.

Storage

Storage:

Store at -20°C. Stable for one year after shipment.

Storage Buffer:

PBS with 0.02% sodium azide and 50% glycerol.

Aliquoting is unnecessary for -20°C storage

***** 20ul sizes contain 0.1% BSA**

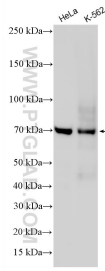
For technical support and original validation data for this product please contact:

T: 1 (888) 4PTGLAB (1-888-478-4522) (toll free in USA), or 1(312) 455-8498 (outside USA)

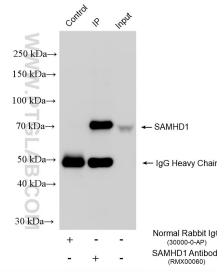
E: proteintech@ptglab.com
W: ptglab.com

This product is exclusively available under Proteintech Group brand and is not available to purchase from any other manufacturer.

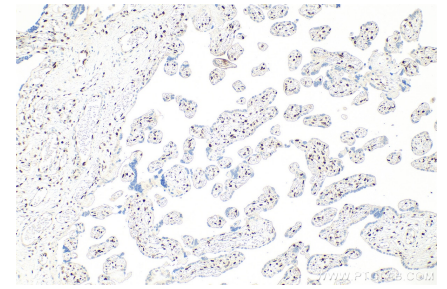
Selected Validation Data



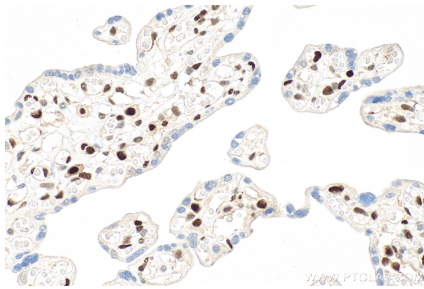
Various lysates were subjected to SDS PAGE followed by western blot with RMX00060 (SAMHD1 antibody) at dilution of 1:10000 incubated at room temperature for 1.5 hours.



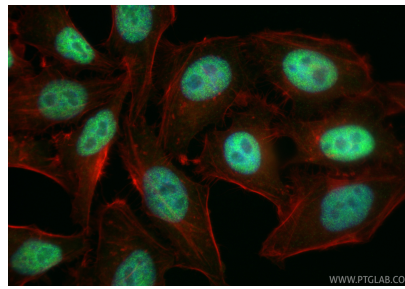
IP result of anti-SAMHD1 (IP:RMX00060, 4ug; Detection:RMX00060 1:6000) with K-562 cells lysate 2440 ug.



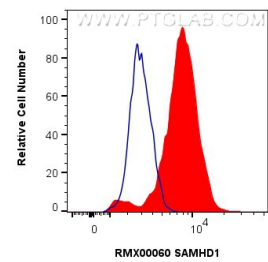
Immunohistochemical analysis of paraffin-embedded human placenta tissue slide using RMX00060 (SAMHD1 antibody) at dilution of 1:1000 (under 10x lens). Heat mediated antigen retrieval with Tris-EDTA buffer (pH 9.0).



Immunohistochemical analysis of paraffin-embedded human placenta tissue slide using RMX00060 (SAMHD1 antibody) at dilution of 1:1000 (under 40x lens). Heat mediated antigen retrieval with Tris-EDTA buffer (pH 9.0).



Immunofluorescent analysis of (4% PFA) fixed HepG2 cells using SAMHD1 antibody (RMX00060) at dilution of 1:500 and CoraLite@488-Conjugated Goat Anti-Rabbit IgG(H+L) (SA00013-2), CL594-phalloidin (red).



1×10^6 K-562 cells were intracellularly stained with 0.25 ug Multi-rAb@ SAMHD1 Multi-Recombinant antibody (RMX00060) and CoraLite@488-Conjugated Goat Anti-Rabbit IgG(H+L) (SA00013-2)(red), or 0.25 ug Isotype Control (blue). Cells were fixed and permeabilized with Transcription Factor Staining Buffer Kit (PF00011).