

For Research Use Only

# Multi-rAb® RBM25 Multi-Recombinant antibody

Catalog Number: RMX00066



## Basic Information

<b>Catalog Number:</b> RMX00066	<b>GenBank Accession Number:</b> BC113389	<b>Purification Method:</b> N/A
<b>Size:</b> 100ul , Concentration: 1000 µg/ml by Nanodrop;	<b>GeneID (NCBI):</b> 58517	<b>Recommended Dilutions:</b> WB: 1:5000-1:50000 IP: 0.5-4.0 ug for 1.0-3.0 mg of total protein lysate IHC: 1:2000-1:8000 IF/ICC: 1:500-1:2000
<b>Source:</b> Rabbit	<b>UNIPROT ID:</b> P49756	
<b>Isotype:</b> IgG	<b>Full Name:</b> RNA binding motif protein 25	
	<b>Calculated MW:</b> 843 aa, 100 kDa	
	<b>Observed MW:</b> 100-120 kDa	

## Applications

**Tested Applications:**  
WB, IHC, IF/ICC, ELISA

**Species Specificity:**  
human, mouse, rat

**Note-IHC: suggested antigen retrieval with TE buffer pH 9.0; (\*) Alternatively, antigen retrieval may be performed with citrate buffer pH 6.0**

**Positive Controls:**

**WB :** HEK-293 cells, PC-12 cells, Jurkat cells, mouse brain tissue

**IP :** HEK-293 cells,

**IHC :** human colon cancer tissue,

**IF/ICC :** HeLa cells,

## Background Information

RNA-binding protein 25 (RBM25), also named as Protein S164 or RNPC7, is a 843 amino acid protein, which contains one RRM domain and one PWI domain. RBM25 localizes in the nucleus and cytoplasm. RBM25 acts as a regulator of alternative pre-mRNA splicing and is involved in apoptotic cell death through the regulation of the apoptotic factor BCL2L1 isoform expression.

## Storage

**Storage:**  
Store at -20°C. Stable for one year after shipment.

**Storage Buffer:**  
PBS with 0.02% sodium azide and 50% glycerol.

Aliquoting is unnecessary for -20°C storage

\*\*\* 20ul sizes contain 0.1% BSA

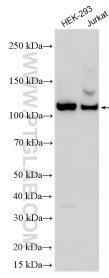
For technical support and original validation data for this product please contact:

T: 1 (888) 4PTGLAB (1-888-478-4522) (toll free in USA), or 1(312) 455-8498 (outside USA)

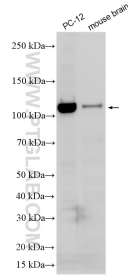
E: [proteintech@ptglab.com](mailto:proteintech@ptglab.com)  
W: [ptglab.com](http://ptglab.com)

This product is exclusively available under Proteintech Group brand and is not available to purchase from any other manufacturer.

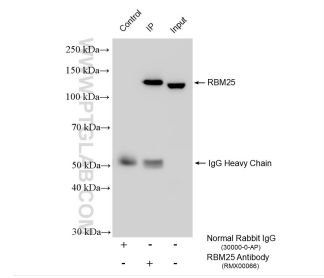
## Selected Validation Data



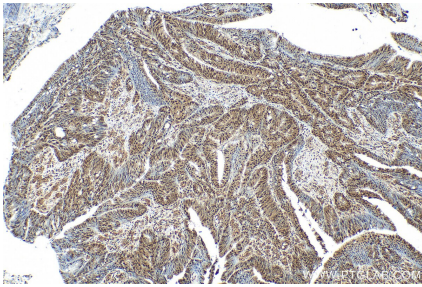
Various lysates were subjected to SDS PAGE followed by western blot with RMX00066 (RBM25 antibody) at dilution of 1:10000 incubated at room temperature for 1.5 hours.



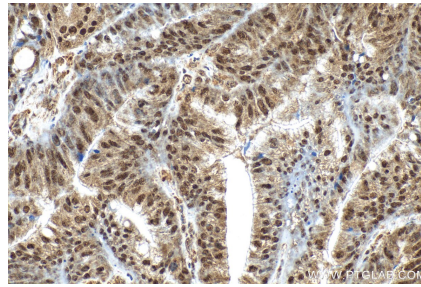
Various lysates were subjected to SDS PAGE followed by western blot with RMX00066 (RBM25 antibody) at dilution of 1:10000 incubated at room temperature for 1.5 hours.



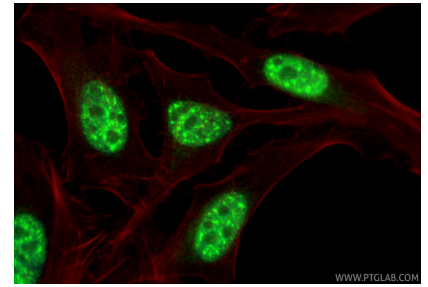
IP result of anti-RBM25 (IP:RMX00066, 4ug; Detection:RMX00066 1:5000) with HEK-293 cells lysate 1000 ug.



Immunohistochemical analysis of paraffin-embedded human colon cancer tissue slide using RMX00066 (RBM25 antibody) at dilution of 1:4000 (under 10x lens). Heat mediated antigen retrieval with Tris-EDTA buffer (pH 9.0).



Immunohistochemical analysis of paraffin-embedded human colon cancer tissue slide using RMX00066 (RBM25 antibody) at dilution of 1:4000 (under 40x lens). Heat mediated antigen retrieval with Tris-EDTA buffer (pH 9.0).



Immunofluorescent analysis of (4% PFA) fixed HeLa cells using RBM25 antibody (RMX00066) at dilution of 1:1000 and CoraLite®488-Conjugated Goat Anti-Rabbit IgG(H+L) (SA00013-2), CL594-Phalloidin (red).