

For Research Use Only

# Multi-rAb® METTL5 Multi-Recombinant antibody

Catalog Number: RMX00070



## Basic Information

<b>Catalog Number:</b> RMX00070	<b>GenBank Accession Number:</b> BC000921	<b>Purification Method:</b> N/A
<b>Size:</b> 100ul , Concentration: 980 µg/ml by Nanodrop;	<b>GeneID (NCBI):</b> 29081	<b>Recommended Dilutions:</b> WB: 1:5000-1:50000 IHC: 1:500-1:2000 IF/ICC: 1:250-1:1000
<b>Source:</b> Rabbit	<b>UNIPROT ID:</b> Q9NRN9	
<b>Isotype:</b> IgG	<b>Full Name:</b> methyltransferase like 5	
	<b>Calculated MW:</b> 209 aa, 24 kDa	
	<b>Observed MW:</b> 24-27 kDa	

## Applications

**Tested Applications:**  
WB, IHC, IF/ICC, ELISA

**Species Specificity:**  
human, mouse

**Note-IHC: suggested antigen retrieval with TE buffer pH 9.0; (\*) Alternatively, antigen retrieval may be performed with citrate buffer pH 6.0**

**Positive Controls:**

WB : Ramos cells, THP-1 cells

IHC : mouse kidney tissue,

IF/ICC : HepG2 cells,

## Background Information

METTL5 is a member of the METTL family of S-adenosyl-methionine-dependent methyltransferases that adds m6A to a specific site, nucleotide A-1832 of 18S rRNA, hereafter referred to as m6A1832. METTL5 is localized in the nucleolus and cytoplasm.

## Storage

**Storage:**  
Store at -20°C. Stable for one year after shipment.  
**Storage Buffer:**  
PBS with 0.02% sodium azide and 50% glycerol.  
Aliquoting is unnecessary for -20°C storage

\*\*\* 20ul sizes contain 0.1% BSA

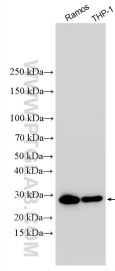
For technical support and original validation data for this product please contact:

T: 1 (888) 4PTGLAB (1-888-478-4522) (toll free in USA), or 1(312) 455-8498 (outside USA)

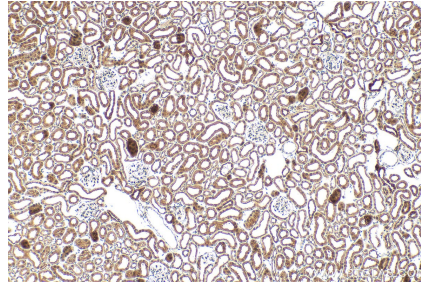
E: proteintech@ptglab.com  
W: ptglab.com

This product is exclusively available under Proteintech Group brand and is not available to purchase from any other manufacturer.

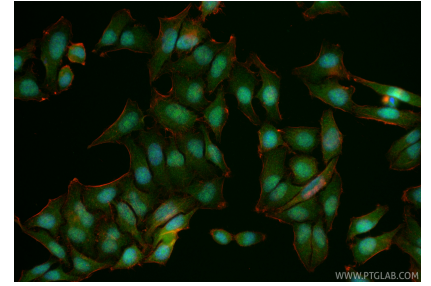
## Selected Validation Data



Various lysates were subjected to SDS PAGE followed by western blot with RMX00070 (METTL5 antibody) at dilution of 1:12000 incubated at room temperature for 1.5 hours.



Immunohistochemical analysis of paraffin-embedded mouse kidney tissue slide using RMX00070 (METTL5 antibody) at dilution of 1:1000 (under 10x lens). Heat mediated antigen retrieval with Tris-EDTA buffer (pH 9.0).



Immunofluorescent analysis of (4% PFA) fixed HepG2 cells using METTL5 antibody (RMX00070) at dilution of 1:500 and CoraLite@488-Conjugated Goat Anti-Rabbit IgG(H+L) (SA00013-2), CL594-phalloidin (red).