

For Research Use Only

# Multi-rAb® Angiotensinogen/AGT Multi-Recombinant antibody

Catalog Number: RMX00082



## Basic Information

<b>Catalog Number:</b> RMX00082	<b>GenBank Accession Number:</b> BC011519	<b>Purification Method:</b> N/A
<b>Size:</b> 100ul , Concentration: 1060 µg/ml by Nanodrop;	<b>GeneID (NCBI):</b> 183	<b>Recommended Dilutions:</b> WB: 1:5000-1:50000 IHC: 1:250-1:1000 IF/ICC: 1:250-1:1000
<b>Source:</b> Rabbit	<b>UNIPROT ID:</b> P01019	
<b>Isotype:</b> IgG	<b>Full Name:</b> angiotensinogen (serpin peptidase inhibitor, clade A, member 8)	
	<b>Calculated MW:</b> 485 aa, 53 kDa	
	<b>Observed MW:</b> 53 kDa	

## Applications

<b>Tested Applications:</b> WB, IHC, IF/ICC, ELISA	<b>Positive Controls:</b>
<b>Species Specificity:</b> human	<b>WB :</b> HepG2 cells, human plasma
<b>Note-IHC: suggested antigen retrieval with TE buffer pH 9.0; (*) Alternatively, antigen retrieval may be performed with citrate buffer pH 6.0</b>	<b>IHC :</b> human liver tissue, <b>IF/ICC :</b> HepG2 cells,

## Background Information

Angiotensinogen is a precursor of angiotensin II (Ang II), is expressed and synthesized largely in the liver and is cleaved by the enzyme renin in response to lowered blood pressure. It has a key role in mediating vascular constriction and regulating salt and fluid homeostasis. The resulting product, angiotensin I, is then cleaved by angiotensin converting enzyme (ACE) to generate the physiologically active enzyme angiotensin II. Mutations in this gene are associated with susceptibility to essential hypertension, and can cause renal tubular dysgenesis, a severe disorder of renal tubular development. Defects in this gene also have been associated with non-familial structural atrial fibrillation, and inflammatory bowel disease.

## Storage

**Storage:**  
Store at -20°C. Stable for one year after shipment.  
**Storage Buffer:**  
PBS with 0.02% sodium azide and 50% glycerol.  
**Aliquoting is unnecessary for -20°C storage**

\*\*\* 20ul sizes contain 0.1% BSA

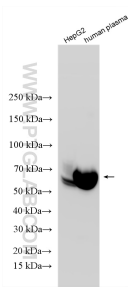
For technical support and original validation data for this product please contact:

T: 1 (888) 4PTGLAB (1-888-478-4522) (toll free  
in USA), or 1(312) 455-8498 (outside USA)

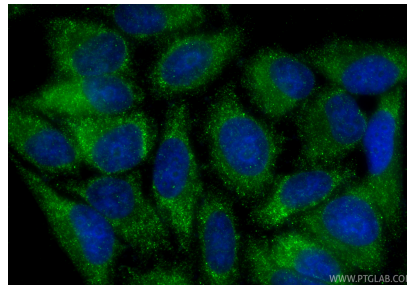
E: [proteintech@ptglab.com](mailto:proteintech@ptglab.com)  
W: [ptglab.com](http://ptglab.com)

**This product is exclusively available under Proteintech Group brand and is not available to purchase from any other manufacturer.**

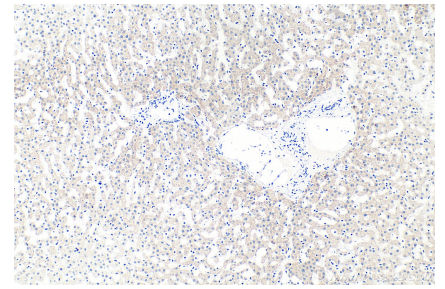
## Selected Validation Data



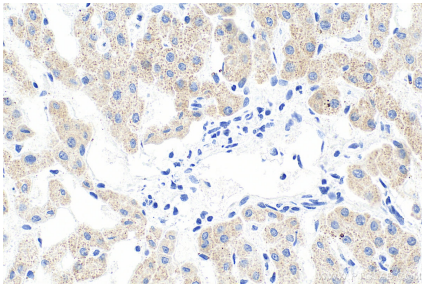
Various lysates were subjected to SDS PAGE followed by western blot with RMX00082 (Angiotensinogen/AGT antibody) at dilution of 1:10000 incubated at room temperature for 1.5 hours.



Immunofluorescent analysis of (-20°C Ethanol) fixed HepG2 cells using Angiotensinogen/AGT antibody (RMX00082) at dilution of 1:500 and CoraLite®488-Conjugated Goat Anti-Rabbit IgG(H+L) (SA00013-2).



Immunohistochemical analysis of paraffin-embedded human liver tissue slide using RMX00082 (Angiotensinogen/AGT antibody) at dilution of 1:500 (under 10x lens). Heat mediated antigen retrieval with Tris-EDTA buffer (pH 9.0).



Immunohistochemical analysis of paraffin-embedded human liver tissue slide using RMX00082 (Angiotensinogen/AGT antibody) at dilution of 1:500 (under 40x lens). Heat mediated antigen retrieval with Tris-EDTA buffer (pH 9.0).