

For Research Use Only

Multi-rAb® MCP-1/CCL2 Multi-Recombinant antibody

Catalog Number: RMX00085



Basic Information

Catalog Number:
RMX00085

Size:
100ul , Concentration: 1050 µg/ml by
Nanodrop;

Source:
Rabbit

Isotype:
IgG

GenBank Accession Number:
NM-011333

GeneID (NCBI):
20296

UNIPROT ID:
P10148

Full Name:
chemokine (C-C motif) ligand 2

Observed MW:
16-20 kDa

Purification Method:
N/A

Recommended Dilutions:
WB: 1:500-1:3600

FC (Intra): 0.2 ug per 10⁶ cells in a
100 µl suspension

Applications

Tested Applications:
WB, FC (Intra), ELISA

Species Specificity:
mouse

Positive Controls:

WB : LPS and Brefeldin A treated RAW 264.7 cells,

FC (Intra) : LPS and Brefeldin A treated RAW 264.7
cells,

Background Information

Monocyte chemoattractant protein 1 (MCP-1), also known as CCL2, is chemotactic for monocyte/macrophage, B cell, and T cell, and belongs to the CC subfamily of chemokines. Chemokines are a superfamily of secreted proteins involved in immunoregulatory and inflammatory processes. The human ortholog has been implicated in the pathogenesis of diseases characterized by monocytic infiltrates, such as psoriasis, rheumatoid arthritis, and atherosclerosis.

Storage

Storage:

Store at -20°C. Stable for one year after shipment.

Storage Buffer:

PBS with 0.02% sodium azide and 50% glycerol.

Aliquoting is unnecessary for -20°C storage

*** 20ul sizes contain 0.1% BSA

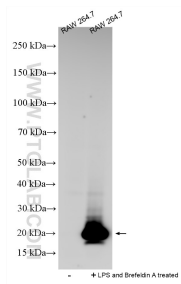
For technical support and original validation data for this product please contact:

T: 1 (888) 4PTGLAB (1-888-478-4522) (toll free
in USA), or 1(312) 455-8498 (outside USA)

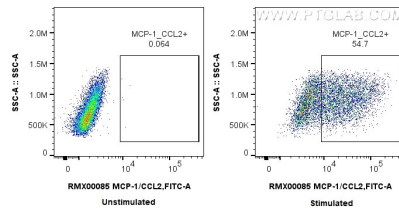
E: proteintech@ptglab.com
W: ptglab.com

This product is exclusively available under Proteintech Group brand and is not available to purchase from any other manufacturer.

Selected Validation Data



Non-treated, LPS and Brefeldin A treated RAW264.7 cells were subjected to SDS PAGE followed by western blot with RMX00085 (MCP-1/CCL2 antibody) at dilution of 1:1800 incubated at room temperature for 1.5 hours.



1×10^6 LPS and Brefeldin A treated RAW 264.7 cells were intracellularly stained with 0.2 ug Mouse MCP-1/Ccl2 Multi-Recombinant Antibody (RMX00085) and CoraLite@488-Conjugated Goat Anti-Rabbit IgG(H+L) (SA00013-2)(red), or 0.2 ug Isotype Control (blue). Cells were fixed and permeabilized with Intracellular Flow Cytometry Fixation & Permeabilization Buffer Kit (PF00019).