

For Research Use Only.
Not For Use In Diagnostics.

HRP-conjugated Affinipure Goat Anti-Rabbit IgG(H+L)

Catalog Number:SA00001-2



www.ptglab.com

Information

Catalog Number:

SA00001-2

Host:

Goat

Applications:

ELISA, WB, Dot blot

Reactivity:

Rabbit

Physical State:

Liquid

Conjugation:

HRP

Clonality:

Polyclonal

Recommended Dilutions

1:2000-1:10,000 for western blotting with ECL substrates

1:1000-1:20,000 for ELISA and Western blotting with chromogenic substrates

Stabilizer

3 mg/ml BSA

Safety Notes

This product is for research use only, not for diagnostic or therapeutic use.

Storage

Storage:

Store at -20°C. Stable for one year after shipment.

Storage Buffer:

0.01 M Sodium phosphate, 0.25 M NaCl, 50% glycerol, 3 mg/ml BSA, pH 7.6.

Aliquoting is unnecessary for -20°C storage

Purity

The antibody was purified from antisera by immunoaffinity chromatography using antigens coupled to agarose beads.

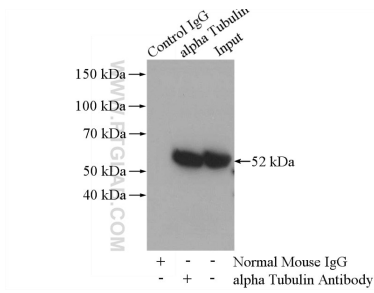
For technical support and original validation data for this product please contact:

T: 1 (888) 4PTGLAB
(1-888-478-4522)
(toll free in USA),
or 1(312) 455-8498
(outside USA)

E : proteintech@ptglab.com
W: ptglab.com

This product is exclusively available under Proteintech Group brand and is not available to purchase from any other manufacturer.

Selected Validation Data



IP Result of anti-alpha Tubulin (IP: 66031-1-Ig, 5ug; Detection:11224-1-AP 1:1000) with HeLa cells lysate 2800ug. SA00001-2 (HRP-conjugated Affinipure Goat Anti-Rabbit IgG(H+L)) as the secondary antibody.