

For Research Use Only.  
Not For Use In Diagnostics.

# HRP-conjugated Affinipure Rabbit Anti-Goat IgG(H+L)

Catalog Number:SA00001-4



[www.ptglab.com](http://www.ptglab.com)

## Information

Catalog Number:

SA00001-4

Host:

Rabbit

Applications:

ELISA, WB, Dot blot

Reactivity:

Goat

Physical State:

Liquid

Conjugation:

HRP

Clonality:

Polyclonal

## Recommended Dilutions

1:2000-1:10,000 for western blotting with ECL substrates

1:1000-1:20,000 for ELISA and Western blotting with chromogenic substrates

## Stabilizer

3 mg/ml BSA

## Safety Notes

This product is for research use only, not for diagnostic or therapeutic use.

## Storage

Storage:

Store at -20°C. Stable for one year after shipment.

Storage Buffer:

0.01 M Sodium phosphate, 0.25 M NaCl, 50% glycerol, 3 mg/ml BSA, pH 7.6.

Aliquoting is unnecessary for -20°C storage

## Purity

The antibody was purified from antisera by immunoaffinity chromatography using antigens coupled to agarose beads.

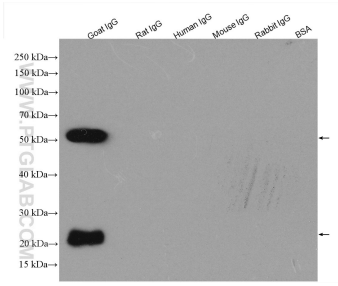
For technical support and original validation data for this product please contact:

T: 1 (888) 4PTGLAB  
(1-888-478-4522)  
(toll free in USA),  
or 1(312) 455-8498  
(outside USA)

E : [proteintech@ptglab.com](mailto:proteintech@ptglab.com)  
W: [ptglab.com](http://ptglab.com)

This product is exclusively available under Proteintech Group brand and is not available to purchase from any other manufacturer.

## Selected Validation Data



IgG proteins of various species were subjected to SDS PAGE followed by western blot with SA00001-4 (HRP-conjugated Affinipure Rabbit Anti-Goat IgG(H+L) at dilution of 1:1000 incubated at room temperature for 1.5 hours.