

For Research Use Only.  
Not For Use In Diagnostics.

# HRP-conjugated Mouse Anti-Heavy Chain of Rabbit IgG

Catalog Number:SA00001-7H



[www.ptglab.com](http://www.ptglab.com)

## Information

Catalog Number:

SA00001-7H

Host:

Mouse

Applications:

ELISA, WB, Dot blot, IP

Reactivity:

Rabbit

Physical State:

Liquid

Conjugation:

HRP

## Recommended Dilutions

1:5000-1:20,000 for western blotting with ECL substrates

1:5000-1:20,000 for ELISA and Western blotting with chromogenic substrates

## Preservative

Proclin300

## Stabilizer

0.5% BSA

## Safety Notes

This product is for research use only, not for diagnostic or therapeutic use.

## Storage

Storage:

Store at -20°C. Stable for one year after shipment.

Storage Buffer:

PBS with 50% Glycerol, 0.05% Proclin300, 0.5% BSA, pH 7.3 Store at -20°C.

Aliquoting is unnecessary for -20°C storage

## Purity

Affinity purified

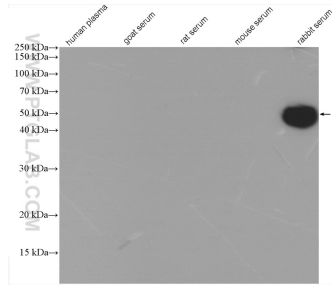
For technical support and original validation data for this product please contact:

T: 1 (888) 4PTGLAB  
(1-888-478-4522)  
(toll free in USA),  
or 1(312) 455-8498  
(outside USA)

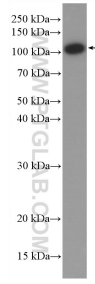
E : [proteintech@ptglab.com](mailto:proteintech@ptglab.com)  
W: [ptglab.com](http://ptglab.com)

This product is exclusively available under Proteintech Group brand and is not available to purchase from any other manufacturer.

## Selected Validation Data



Various serum/plasma lysate were subjected to SDS PAGE followed by western blot with SA00001-7H (HRP-Mouse Anti-Rabbit IgG heavy Chain Specific antibody) at dilution of 1:15000 incubated at room temperature for 1.5 hours.



Jurkat cells were subjected to SDS PAGE followed by western blot with 17170-1-AP (IARS2 antibody) at dilution of 1:1000 incubated at room temperature for 1.5 hours. SA00001-7H (HRP-Mouse Anti-Rabbit IgG heavy Chain Specific antibody) as secondary antibody with dilution 1:15000.