

For Research Use Only.
Not For Use In Diagnostics.

HRP-conjugated IgG Fraction Monoclonal Mouse Anti-Rabbit IgG, Light Chain Specific



www.ptglab.com

Catalog Number: SA00001-7L

Information

Catalog Number:

SA00001-7L

Host:

Mouse

Applications:

ELISA, WB, Dot blot

Reactivity:

Rabbit

Physical State:

Liquid

Conjugation:

HRP

Clonality:

Monoclonal

Recommended Dilutions

1:4000-1:10000 for western blotting with ECL substrates

1:2000-1:50000 for ELISA and Western blotting with chromogenic substrates

Stabilizer

3 mg/ml BSA

Safety Notes

This product is for research use only, not for diagnostic or therapeutic use.

Storage

Storage:

Store at -20°C. Stable for one year after shipment.

Storage Buffer:

0.01 M Sodium phosphate, 0.25 M NaCl, 50% glycerol, 3 mg/ml BSA, pH 7.6.

Aliquoting is unnecessary for -20°C storage

Purity

The antibody was purified from antisera by immunoaffinity chromatography using antigens coupled to agarose beads.

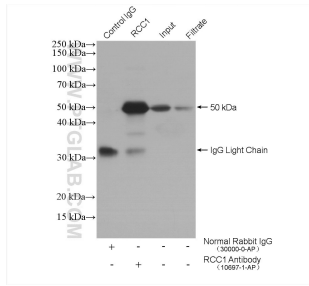
For technical support and original validation data for this product please contact:

T: 1 (888) 4PTGLAB
(1-888-478-4522)
(toll free in USA),
or 1(312) 455-8498
(outside USA)

E : proteintech@ptglab.com
W: ptglab.com

This product is exclusively available under Proteintech Group brand and is not available to purchase from any other manufacturer.

Selected Validation Data



IP result of anti-RCC1 (IP:10697-1-AP, 4ug;
Detection:10697-1-AP 1:500) with HeLa cells lysate
1600 ug. SA00001-7L (HRP-Mouse Anti-Rabbit IgG
Light Chain Specific) as secondary antibody.