

For Research Use Only.
Not For Use In Diagnostics.

Biotin-conjugated Donkey Anti-Rabbit IgG(H+L)

Catalog Number:SA00004-11



Information	Catalog Number: SA00004-11 Host: Donkey Applications: ELISA, WB, IHC/ICC	Reactivity: Rabbit Physical State: Liquid Conjugation: Biotin	Clonality: Polyclonal
Recommended Dilutions	1:100 – 1:1000 for enzyme immunohistochemistry on tissue sections 1:4000-1:80000 for ELISA and Western blotting with chromogenic substrates		
Preservative	0.01% Sodium Azide		
Stabilizer	5 mg/ml BSA		
Safety Notes	This product is for research use only, not for diagnostic or therapeutic use.		
Storage	Storage: Store at -20°C. Stable for one year after shipment. Storage Buffer: 0.01 M Sodium phosphate, 0.25 M NaCl, 50% glycerol, 5 mg/ml BSA, 0.01% Sodium Azide, pH 7.6. Aliquoting is unnecessary for -20°C storage		
Purity	The antibody was purified from antisera by immunoaffinity chromatography using antigens coupled to agarose beads.		

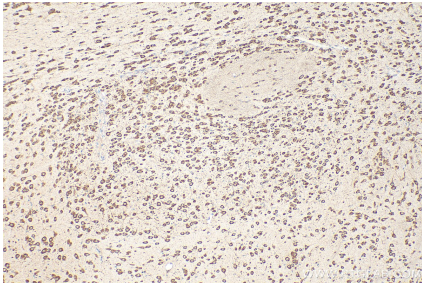
For technical support and original validation data for this product please contact:

T: 1 (888) 4PTGLAB
(1-888-478-4522)
(toll free in USA),
or 1(312) 455-8498
(outside USA)

E : proteintech@ptglab.com
W: ptglab.com

This product is exclusively available under Proteintech Group brand and is not available to purchase from any other manufacturer.

Selected Validation Data



Immunohistochemical analysis of paraffin-embedded mouse brain tissue slide using 10095-2-AP (EEF1B2 antibody) and Biotin-conjugated Donkey Anti-Rabbit IgG(H+L) (SA00004-11) at dilution of 1:200.