

For Research Use Only.
Not For Use In Diagnostics.

CoraLite488-conjugated Goat Anti-Rabbit IgG(H+L)

Catalog Number:SA00013-2



www.ptglab.com

Information

Catalog Number:

SA00013-2

Host:

Goat

Applications:

IF, FC

Reactivity:

Rabbit

Physical State:

Liquid

Conjugation:

CoraLite®488

Clonality:

Polyclonal

Recommended Dilutions

1:100-1:1000

Preservative

0.02% Sodium Azide

Fluorophore

CL488 Fluorescent Dye, Amax=488 nm; Emax=515 nm

Stabilizer

5 mg/ml BSA

Safety Notes

This product is for research use only, not for diagnostic or therapeutic use.

Storage

Storage:

Store at -20°C. Stable for one year after shipment.

Storage Buffer:

0.01 M Sodium phosphate, 0.25 M NaCl, 50% glycerol, 5 mg/ml BSA, 0.02% Sodium Azide, pH 7.6.

Aliquoting is unnecessary for -20°C storage

Purity

The antibody was purified from antisera by immunoaffinity chromatography using antigens coupled to agarose beads.

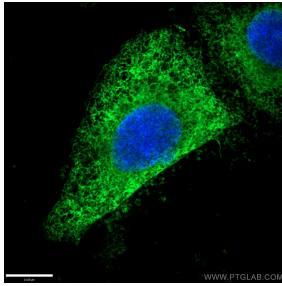
For technical support and original validation data for this product please contact:

T: 1 (888) 4PTGLAB
(1-888-478-4522)
(toll free in USA),
or 1(312) 455-8498
(outside USA)

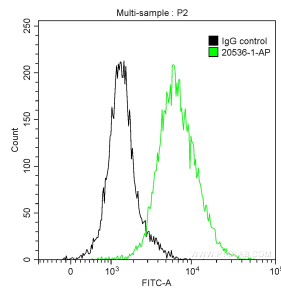
E : proteintech@ptglab.com
W: ptglab.com

This product is exclusively available under Proteintech Group brand and is not available to purchase from any other manufacturer.

Selected Validation Data



Immunofluorescent analysis of (10% Formaldehyde) fixed HepG2 cells using 10427-2-AP (Calnexin antibody) at dilution of 1:50 and CoraLite®488-Conjugated Goat Anti-Rabbit IgG(H+L) (SA00013-2).



1X10⁶ HepG2 cells were intracellularly stained with 0.2 ug Anti-Human Beta Actin (20536-1-AP) and CoraLite®488-Conjugated Goat Anti-Rabbit IgG(H+L) (SA00013-2) at dilution 1:1000 (green), and 0.2 ug Control Antibody. Cells were fixed with 90% MeOH.