

For Research Use Only.  
Not For Use In Diagnostics.

# CoraLite488-conjugated Donkey Anti-Mouse IgG(H+L)

Catalog Number:SA00013-5



[www.ptglab.com](http://www.ptglab.com)

## Information

### Catalog Number:

SA00013-5

### Host:

Donkey

### Applications:

IF, FC

### Reactivity:

Mouse (Minimal Cross Reactivity:

Bovine, Chicken, Goat, Guinea Pig,

Syrian Hamster, Horse, Human,

Rabbit, Sheep Serum Proteins)

### Physical State:

Liquid

### Conjugation:

CoraLite®488

### Clonality:

Polyclonal

## Recommended Dilutions

1:100 – 1:500

## Preservative

0.02% Sodium Azide

## Fluorophore

CL488 Fluorescent Dye  
Amax=488 nm Emax=515 nm

## Stabilizer

5 mg/ml BSA

## Safety Notes

This product is for research use only, not for diagnostic or therapeutic use.

## Storage

### Storage:

Store at -20°C. Stable for one year after shipment.

### Storage Buffer:

0.01 M Sodium phosphate, 0.25 M NaCl, 50% glycerol, 5 mg/ml BSA, 0.02% Sodium Azide, pH 7.6.

Aliquoting is unnecessary for -20°C storage

## Purity

The antibody was purified from antisera by immunoaffinity chromatography using antigens coupled to agarose beads.

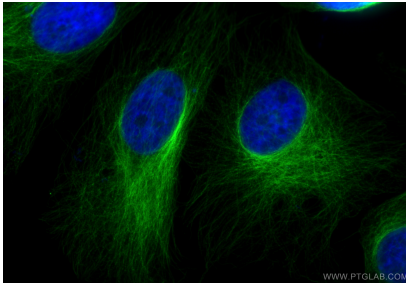
For technical support and original validation data for this product please contact:

T: 1 (888) 4PTGLAB  
(1-888-478-4522)  
(toll free in USA),  
or 1(312) 455-8498  
(outside USA)

E : [proteintech@ptglab.com](mailto:proteintech@ptglab.com)  
W: [ptglab.com](http://ptglab.com)

This product is exclusively available under Proteintech Group brand and is not available to purchase from any other manufacturer.

## Selected Validation Data



Immunofluorescent analysis of (4% PFA) fixed HeLa cells using Alpha Tubulin antibody (66031-1-Ig, Clone: 1E4C11 ) at dilution of 1:400 and CoraLite®488-Conjugated AffiniPure Donkey Anti-Mouse IgG(H+L) (SA00013-5).