

For Research Use Only.
Not For Use In Diagnostics.

CoraLite594-conjugated Recombinant Rabbit Anti-Mouse IgG Kappa Light Chain



Catalog Number: SA00014-2

Information

Catalog Number:

SA00014-2

Host:

Rabbit

Applications:

IF

Reactivity:

Mouse

Physical State:

Liquid

Conjugation:

CoraLite®594

Clonality:

Recombinant

Recommended Dilutions

1:100-1:500

Preservative

Proclin300

Fluorophore

CL594 Fluorescent Dye. Amax=593 nm, Emax=614 nm

Stabilizer

0.5% BSA

Storage

Storage:

Store at -20°C. Stable for one year after shipment.

Storage Buffer:

PBS with 50% Glycerol, 0.05% Proclin300, 0.5% BSA, pH 7.3.

Aliquoting is unnecessary for -20°C storage

Purity

Protein A purification

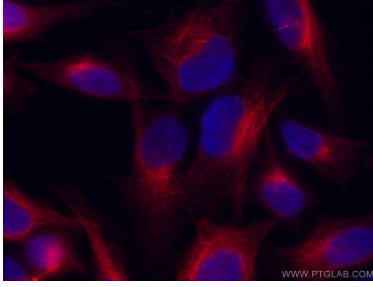
For technical support and original validation data for this product please contact:

T: 1 (888) 4PTGLAB
(1-888-478-4522)
(toll free in USA),
or 1(312) 455-8498
(outside USA)

E : proteintech@ptglab.com
W: ptglab.com

This product is exclusively available under Proteintech Group brand and is not available to purchase from any other manufacturer.

Selected Validation Data



Immunofluorescent analysis of (4% PFA) fixed HeLa cells using 66031-1-Ig (alpha tubulin antibody) and CoraLite®594 mouse IgG Kappa Light Chain antibody (SA00014-2) at dilution of 1:500. DAPI (blue).