

For Research Use Only.  
Not For Use In Diagnostics.

# CoraLite647-conjugated Mouse Anti-Heavy Chain of Rabbit IgG

Catalog Number:SA00014-6



## Information

### Catalog Number:

SA00014-6

### Host:

Mouse

### Applications:

IF, FC

### Reactivity:

Rabbit

### Physical State:

Liquid

### Conjugation:

CoraLite®647

### Clonality:

Monoclonal

## Recommended Dilutions

1:100-1:500

## Preservative

Proclin300

## Fluorophore

CL647 Fluorescent Dye. Amax=642nm, Emax=662nm

## Stabilizer

0.5% BSA

## Storage

### Storage:

Store at -20°C. Stable for one year after shipment.

### Storage Buffer:

PBS with 50% Glycerol, 0.05% Proclin300, 0.5% BSA, pH 7.3.

Aliquoting is unnecessary for -20°C storage

## Purity

Protein G purification

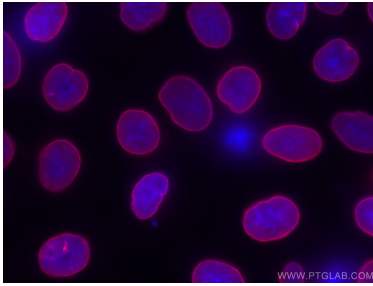
For technical support and original validation data for this product please contact:

T: 1 (888) 4PTGLAB  
(1-888-478-4522)  
(toll free in USA),  
or 1(312) 455-8498  
(outside USA)

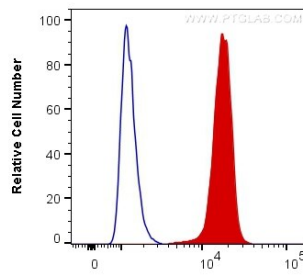
E : proteintech@ptglab.com  
W: ptglab.com

This product is exclusively available under Proteintech Group brand and is not available to purchase from any other manufacturer.

## Selected Validation Data



Immunofluorescent analysis of (-20°C Ethanol) fixed HeLa cells using 12987-1-AP (Lamin B antibody) and the CoraLite®647-Mouse Anti-Heavy chain of Rabbit IgG antibody (SA00014-6), at dilution of 1:200.



1X10<sup>6</sup> HepG2 cells were intracellularly stained with Anti-human TDP-43 recombinant antibody (80002-1-RR) and 0.2 ug CoraLite®647 Mouse Anti-Rabbit Heavy chain of Rabbit IgG (SA00014-6) (red), or 0.2 ug Control Antibody. Cells were fixed and permeabilized with Transcription Factor Staining Buffer Kit (PF00011).