

For Research Use Only.
Not For Use In Diagnostics.

CoraLite647-conjugated AffiniPure F(ab')₂ Fragment Donkey Anti- Rabbit IgG (H+L)



www.ptglab.com

Catalog Number: SA00014-7

Information

Catalog Number:

SA00014-7

Host:

Donkey

Applications:

IF, FC

Reactivity:

Rabbit

Physical State:

Liquid

Conjugation:

CoraLite®647

Clonality:

Polyclonal

Recommended Dilutions

1:100 – 1:500

Preservative

0.01% Sodium Azide

Fluorophore

CL647 Fluorescent Dye. A_{max}=642nm, E_{max}=662nm

Stabilizer

5 mg/ml BSA

Absorbance Ratio

A₆₅₁/A₂₈₀ = 4.9

Storage

Storage:

Store at -20°C. Stable for one year after shipment.

Storage Buffer:

0.01 M Sodium phosphate, 0.25 M NaCl, 50% glycerol, 5 mg/ml BSA, 0.01% Sodium Azide, pH 7.6.

Aliquoting is unnecessary for -20°C storage

Purity

The antibody was purified from antisera by immunoaffinity chromatography using antigens coupled to agarose beads.

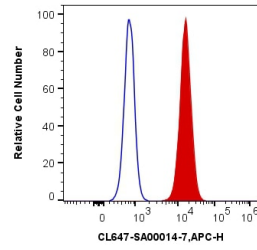
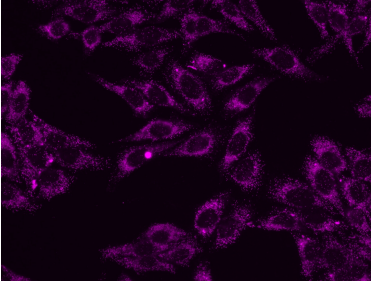
For technical support and original validation data for this product please contact:

T: 1 (888) 4PTGLAB
(1-888-478-4522)
(toll free in USA),
or 1(312) 455-8498
(outside USA)

E : proteintech@ptglab.com
W: ptglab.com

This product is exclusively available under Proteintech Group brand and is not available to purchase from any other manufacturer.

Selected Validation Data



Immunofluorescent analysis of (4% PFA) fixed HeLa cells using 10594-1-AP (PEX14 antibody) and CoraLite®647 conjugated AffiniPure F(ab')₂ Fragment Donkey Anti-Rabbit IgG (H+L) antibody (SA00014-7) at dilution of 1:150.

1X10⁶ HEK-293 cells were intracellularly stained with 0.2 ug Anti-GOLGA2/GM130 Polyclonal antibody (11308-1-AP) and CoraLite®647-Conjugated AffiniPure F(ab')₂ Fragment Donkey Anti-Rabbit IgG (H+L) (SA00014-7) at dilution 1:1000 (red), or 0.2 ug Control Antibody. Cells were fixed with 4% PFA and permeabilized with Flow Cytometry Perm Buffer (PF00011-C).